

An impressionist landscape painting featuring a central sun or moon rendered in vibrant orange and red tones, surrounded by swirling, textured brushstrokes in shades of green, blue, and grey. The foreground is dominated by horizontal, layered brushstrokes in various shades of green and blue, suggesting a field or water. The overall style is characteristic of Impressionism, with visible, expressive brushwork and a focus on light and color.

**IMPRESSIONIST AND MODERN
WORKS ON PAPER AND DAY SALE**

CHRISTIE'S









FRONT COVER
Lot 835

FRONTISPIECE TWO
Lot 819

FRONTISPIECE THREE
Lot 731

FRONTISPIECE FOUR
Lot 838

FRONTISPIECE FIVE
Lot 755

FRONTISPIECE SIX
Lot 884

IMPRESSIONIST AND MODERN WORKS ON PAPER AND DAY SALE

AUCTION

Session I: Works on Paper
11.30 am (Lots 701-772)

Session II: Day Sale
2.00 pm (Lots 801-931)

20 Rockefeller Plaza
New York, NY 10020

VIEWING

Saturday 30 April–Saturday 14 May
Monday–Saturday 10.00–5.00 pm
Sunday 1 May 1.00 pm–5.00 pm
Sunday 8 May 10.00 am–5.00 pm

AUCTIONEERS

David Kleiweg de Zwaan (#1365999)
Adrien Meyer (#1365994)
Tash Perrin (#1039052)

AUCTION LICENSE

Christie's (#1213717)

AUCTION CODE AND NUMBER

To place bids please contact the Bid department +1 212 636 2437
Please note this sale should be referred to as **CHARLEY-20682**

ABSENTEE AND TELEPHONE BIDS

Tel: +1 212 636 2437

BIDDING ON BEHALF OF THE SELLER

The auctioneer may, at his or her sole option, bid on behalf of the seller up to but not including the amount of the reserve either by making consecutive bids or by making bids in response to other bidders. The auctioneer will not identify these as bids made on behalf of the seller and will not make any such bids at or above the reserve.



Scan to view full auction online

CHRISTIE'S



CONTACTS

HEAD OF DAY SALE

Sarah El-Tamer
sel-tamer@christies.com
+1 212 636 2146

HEAD OF WORKS ON PAPER SALE

Allegra Bettini
abettini@christies.com
+1 212 636 2466

CATALOGUERS

Caitlin Dwyer
cdwyer@christies.com
+1 212 636 2529

Emmanuelle Loulmet
eloulmet@christies.com
+1 212 636 2226

SALE COORDINATOR

Emily Clifford
eclifford@christies.com
+1 212 636 2067

ESTIMATES AND RESERVES

Estimates are based on the condition, rarity, quality and provenance of the lots and on prices recently paid at auction for similar property. Estimates can change. No bidder or other person may rely on any estimates as a prediction or guarantee of the actual selling price of a lot or its value for any other purpose. Estimates do not include the buyer's premium or any applicable taxes. Each lot is subject to a reserve unless marked with the no reserve symbol.

FURTHER INFORMATION - NOT A CATALOGUE

This is not a catalogue for the auction. The sale of each lot is subject to the Conditions of Sale, Important Notices, and Explanation of Cataloguing Practice which are set out online, with other important sale information, at christies.com.

SYMBOLS USED IN THIS PUBLICATION AND IMPORTANT NOTICES

Please see the Conditions of Sale at christies.com for full descriptions of the symbols used in this section and for other important sale information. Please note that all lots are marked as a convenience to you and we shall not be liable for any errors in, or failure to, mark a lot.

SYMBOLS

- Christie's has a direct financial interest in the lot.
- Δ Owned by Christie's or another Christie's Group company in whole or in part.
- ◆ Christie's has a direct financial interest in the lot and has funded all or part of our interest with the help of someone else.
- ▣ Bidding by interested parties.
- Lot offered without reserve which will be sold to the highest bidder regardless of the pre-sale estimate in the catalogue.
- Lot incorporates material from endangered species which could result in export and/or import restrictions.
- See Storage and Collection pages in the catalogue for this sale.

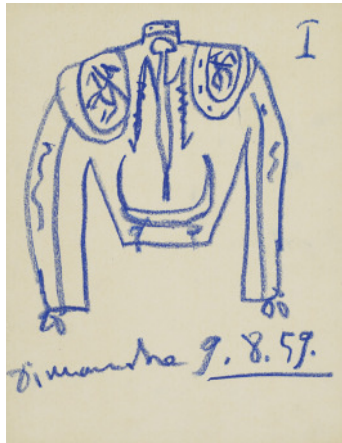


**IMPRESSIONIST AND MODERN
WORKS ON PAPER SALE**

Saturday 14 May 2022
11:30 am (Lots 701-772)

Scan to view
full auction online





701

PABLO PICASSO (1881-1973)

Costume pour le torero Miguel Dominguín

dated 'Dimanche 9. 8. 59.' (lower center) and numbered 'I' (upper right)
blue wax crayon on folded paper
8¾ x 6¾ in. (22 x 17 cm.)
Drawn on 9 August 1959

\$12,000-18,000



702

MARC CHAGALL (1887-1985)

Les Acrobates

signed 'Marc Chagall' (lower left); signed again and dated 'Marc Chagall 1960' (on the reverse)
gouache, pastel, brush and pen and ink on paper
12½ x 9½ in. (31.5 x 24 cm.)
Executed in 1960

\$40,000-60,000



703

BERNARD BUFFET (1928-1999)

Tournesols et melon

signed and dated 'B. Buffet. 55' (upper right) and signed and dated again 'Bernard Buffet 55' (lower right)
gouache, watercolor, brush and India ink over pencil on paper
25¼ x 19¾ in. (64.5 x 49.7 cm.)
Painted in 1955

\$30,000-50,000

704

RAOUL DUFY (1877-1953)

Livre d'or de Marianne

signed, dated and inscribed 'à Georges Marianne, le Coeur, le Palais et le Ventre de Paris Raoul Dufy Mai 1927' (upper center)
gouache, watercolor and brush and black ink on paper
12 x 17¾ in. (30.5 x 44 cm.)
Painted in May 1927

\$45,000-65,000



PROPERTY FROM THE ESTATE OF RUTH S. STANTON

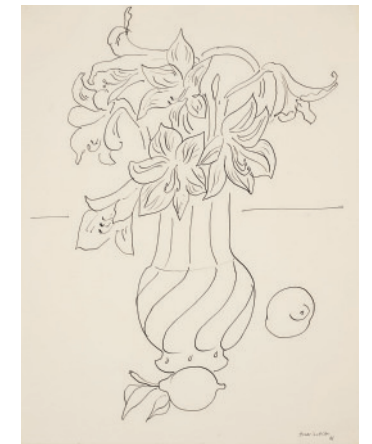
705

HENRI MATISSE (1869-1954)

Vase de fleurs et citrons sur un entablement

signed and dated 'Henri Matisse 41' (lower right)
pen and India ink on paper
20¾ x 16 in. (52.5 x 40.7 cm.)
Drawn in 1941

\$70,000-100,000



706

LÉONARD TSUGUHARU FOUJITA (1886-1968)

Le déjeuner sur l'herbe

signed, dated and signed again and inscribed in Japanese 'T. Foujita 1917 Paris' (lower right)
watercolor, pen and black ink and pencil on paper
10¼ x 17¼ in. (26 x 43.7 cm.)
Executed in Paris in 1917

\$60,000-80,000





707

LÉONARD TSUGUHARU FOUJITA (1886-1968)

Mère et enfant

signed and dated and signed again in Japanese 'Foujita 1925' (lower left); signed and dated again and signed again in Japanese and inscribed 'Foujita 1925 Paris' (on the reverse)
watercolor, and pen and India ink and gold leaf on paper
10 x 7 1/8 in. (25.4 x 18.2 cm.)
Executed in Paris in 1925

\$100,000-150,000

710

JOAN MIRÓ (1893-1983)

Sans titre

signed 'Miró.' (center right)
oil and gouache over monotype on Japan paper
23 x 19 1/8 in. (58.5 x 48.6 cm.)
Executed in 1977

\$250,000-350,000



PROPERTY FROM A PROMINENT PRIVATE COLLECTION

708

ANDRÉ DERAÏN (1880-1954)

Le Repos

signed and titled 'a Derain Repos' (lower right)
gouache, watercolor and brush and black ink over pencil on paper
16 7/8 x 20 1/8 in. (42.9 x 51.2 cm.)
Painted in 1906

\$350,000-550,000

PROPERTY FROM A NEW YORK ESTATE

711

ALBERTO GIACOMETTI (1901-1966)

Personnages dans un intérieur (recto); Hommes qui marchent (verso)

black lithographic crayon on paper
15 3/8 x 11 1/8 in. (39 x 28.2 cm.)
Drawn circa 1951

\$40,000-60,000



709

MARC CHAGALL (1887-1985)

L'Offrande

signed 'Marc Chagall' (lower left)
brush and pen and India ink and inkwash on paper
23 3/8 x 18 in. (60 x 45.5 cm.)
Executed in 1966

\$180,000-250,000

712

HANS BELLMER (1902-1975)

Sans titre (recto and verso)

signed 'Bellmer' (lower right) and dated '1965' (lower left)
pencil with white heightening on paper (recto); pencil on paper (verso)
19 3/4 x 12 7/8 in. (50.3 x 32.6 cm.)
Drawn in 1965

\$12,000-18,000





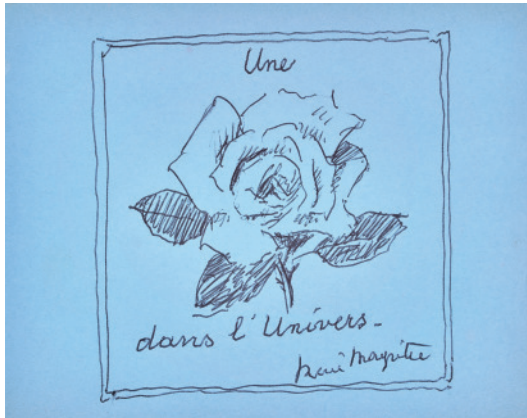
713

RENÉ MAGRITTE (1898-1967)

Je ne vois rien autour du paysage

signed 'Magritte.' (lower right)
black ballpoint pen on colored paper
4½ x 5½ in. (11.5 x 14.5 cm.)
Drawn circa 1960

\$12,000-18,000



714

RENÉ MAGRITTE (1898-1967)

Une rose dans l'univers

signed 'René Magritte' (lower right)
black ballpoint pen on colored paper
4½ x 5½ in. (11.5 x 14.5 cm.)
Drawn circa 1960

\$12,000-18,000



715

JOAN MIRÓ (1893-1983)

Femme, oiseau, étoiles

signed 'Miró' (lower left); signed again, dated, titled and inscribed 'Joan Miró Femme, oiseau, étoiles Barcelone, 8-1-1943' (on the reverse)
watercolor, pastel and pencil on paper
26¼ x 20¼ in. (66.6 x 51 cm.)
Executed in Barcelona on 8 January 1943

\$600,000-800,000

PROPERTY FROM A NEW YORK ESTATE

716

KURT SCHWITTERS (1887-1948)

Ohne Titel (Rot, Schwarz, Gelb)

signed and dated 'Kurt Schwitters 1931' (on the artist's mount)
pencil, yellow cellophane, photo and paper collage on paper
Image size: 5½ x 4¼ in. (14 x 10.8 cm.)
Mount size: 9¾ x 6¾ in. (24.5 x 16.1 cm.)
Executed in 1931

\$40,000-60,000



PROPERTY FROM A NEW YORK ESTATE

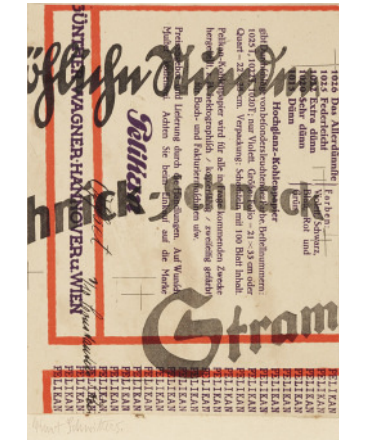
717

KURT SCHWITTERS (1887-1948)

Schnack (Pelikan)

signed 'Kurt Schwitters.' (on the artist's mount)
printed paper laid down card
Sheet size: 6½ x 4 in. (15.6 x 12 cm.)
Mount size: 7½ x 5¼ in. (18.1 x 13.3 cm.)
Executed circa 1925

\$15,000-20,000



PROPERTY FROM A NEW YORK ESTATE

718

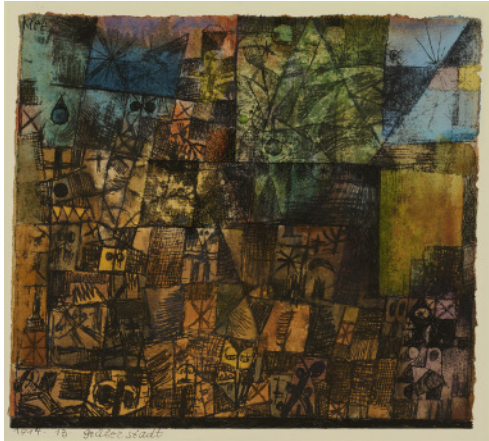
KURT SCHWITTERS (1887-1948)

Ohne Titel (Zwei Pferden)

charcoal on paper
5½ x 3¾ in. (14.2 x 9.8 cm.)
Drawn in 1918

\$7,000-10,000





719

PAUL KLEE (1879-1940)

Gräberstadt

signed 'Klee' (upper left); dated, titled and numbered '1914. 13.
Gräberstadt' (on the artist's mount)
watercolor, pen and black ink on paper laid down on card
Sheet size: 5½ x 6¾ in. (14.5 x 16.1 cm.)
Mount size: 9½ x 12 in. (24 x 30.5 cm.)
Executed in 1914

\$400,000-600,000



720

ALEXEJ VON JAWLENSKY (1864-1941)

Variation

signed with initials 'A.J.' (lower left)
oil on linen-finish paper laid down on board
14¾ x 10¾ in. (36.2 x 27.3 cm.)
Painted circa 1918

\$120,000-180,000



721

ERNST LUDWIG KIRCHNER (1880-1938)

Drei Tänzerinnen (Wigmann-Gruppe)

signed 'EL Kirchner' (lower right)
gouache, watercolor and black Conté crayon on paper
20¾ x 14¾ in. (52.7 x 36.5 cm.)
Executed circa 1926

\$60,000-80,000

PROPERTY FROM THE COLLECTION OF ALMA AND ALFRED HITCHCOCK

722

PAUL KLEE (1879-1940)

Maske mit Sense

signed 'Klee' (lower left); dated, titled and numbered '1927 g.5. "Maske mit Sense"' (on the artist's mount)
watercolor and brush and black ink on paper mounted on card
Sheet size: 18¾ x 12¼ in. (46.7 x 31 cm.)
Mount size: 24¾ x 17¾ in. (62.8 x 45.5 cm.)
Executed in 1927

\$120,000-180,000



PROPERTY FROM THE COLLECTION OF ALMA AND ALFRED HITCHCOCK

723

PAUL KLEE (1879-1940)

Odysseisch

signed 'Klee' (lower right); dated, titled and numbered '1924. 260. Odysseisch' (on the artist's mount)
watercolor and oil transfer on paper laid down on card
Sheet size: 12¾ x 19¾ in. (32.7 x 50.3 cm.)
Mount size: 19 x 25 in. (48 x 63.2 cm.)
Executed in 1924

\$120,000-180,000



724

EGON SCHIELE (1890-1918)

*Sitzender Bub mit gefalteten Händen (recto);
Bildnisstudie Dr. Oskar Reichel mit erhobener linker Hand (verso)*

signed with initial and dated 'S.10.' (lower right)
gouache, watercolor and brush and black ink over pencil on paper (recto); black Conté crayon on paper (verso)
16¾ x 11¼ in. (43 x 28.7 cm.)
Executed in 1910

\$250,000-350,000





725

GEORGE GROSZ (1893-1959)

Restaurantszene

signed and dated 'Grosz 31' (lower left)
watercolor and pen and brown ink on paper
25% x 18% in. (65.1 x 47.6 cm.)
Executed in 1931

\$50,000-70,000



726

GEORGE GROSZ (1893-1959)

Zugtier

signed and dedicated 'To George Joel George Grosz' (lower left)
watercolor and pen and India ink on paper
23% x 18 in. (60 x 45.7 cm.)
Executed in Berlin in 1928

\$20,000-30,000



727

OSKAR KOKOSCHKA (1886-1980)

Bildnis Nell Walden

signed with initials 'OK' (lower right)
pen and India ink on paper
15¼ x 11½ in. (39 x 29.3 cm.)

\$8,000-12,000



728

JAN TOOROP (1858-1928)

Twee muzen

signed and dedicated 'JTh. Toorop aan Marry v./d Elst' (lower left)
pencil on paper
8¼ x 5¼ in. (21 x 13.5 cm.)

\$10,000-15,000

PROPERTY FROM THE COLLECTION OF JOHN AND SALLY LEVY

729

HENRI MATISSE (1869-1954)

Grand nu au fauteuil

signed 'Henri-Matisse' (lower right)
charcoal and estompe on paper
12¼ x 18% in. (31.2 x 47.8 cm.)
Drawn in 1923

\$70,000-100,000



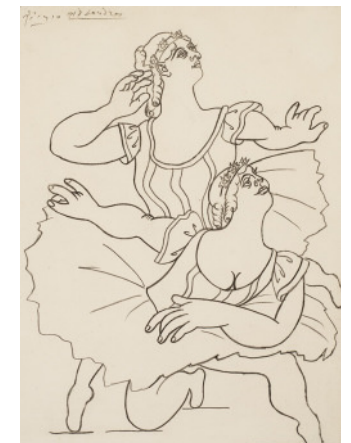
730

PABLO PICASSO (1881-1973)

Deux danseuses

signed, dated and inscribed 'Picasso 1919 Londres' (upper left)
pencil on paper
12¼ x 9% in. (31.2 x 23.8 cm.)
Drawn in London in 1919

\$200,000-300,000





PROPERTY FROM A PRIVATE NEW YORK COLLECTION

731

EDGAR DEGAS (1834-1917)

Danseuses

signed 'Degas' (lower left)
pastel on paper laid down on board
26½ x 18¾ in. (67.5 x 46.6 cm.)
Drawn circa 1896

\$400,000-600,000

PROPERTY FROM A PRIVATE FRENCH COLLECTION

734

PIERRE-AUGUSTE RENOIR (1841-1919)

Buste de femme avec chapeau

signed with initial 'R' (lower right)
pastel and sanguine on paper
24¾ x 18¾ in. (62.8 x 47.9 cm.)
Drawn circa 1915

\$120,000-180,000



PROPERTY FROM A DISTINGUISHED AMERICAN ESTATE

732

PIERRE-AUGUSTE RENOIR (1841-1919)

Au bord de l'eau

stamped with signature 'Renoir.' (Lugt 2137b; lower right)
watercolor on paper
7½ x 11½ in. (18.2 x 31.6 cm.)
Painted circa 1890

\$50,000-70,000

735

CAMILLE PISSARRO (1830-1903)

Femme lavant du linge dans un baquet

stamped with initials 'C.P.' (Lugt 613a; lower right)
gouache, watercolor and pencil on paper laid down on card
10½ x 9¼ in. (26.8 x 23.6 cm.)
Executed circa 1889

\$40,000-60,000



PROPERTY FROM A DISTINGUISHED AMERICAN ESTATE

733

ODILON REDON (1840-1916)

Vase de fleurs

signed 'ODILON REDON' (lower left)
pastel on paper laid down on card
27¾ x 19¼ in. (70.4 x 48.7 cm.)

\$300,000-500,000

PROPERTY FROM A DISTINGUISHED EUROPEAN COLLECTION

736

HONORÉ DAUMIER (1808-1879)

Un défenseur habile

signed 'h. Daumier' (lower left)
gouache, watercolor, charcoal and pen and black ink on paper
5½ x 6¾ in. (13.1 x 17.1 cm.)
Executed circa 1855-1860

\$250,000-350,000





737

ÉDOUARD VUILLARD (1868-1940)

Devant Les Pavillons

pastel on paper
25½ x 19¾ in. (64.7 x 49.9 cm.)
Drawn in 1910-1911

\$30,000-50,000



738

HENRI DE TOULOUSE-LAUTREC (1864-1901)

L'Argent (Comédie en 4 actes de M.E. Fabre)

peinture à la colle on board
16 x 12¾ in. (40.5 x 31 cm.)
Painted in 1895

\$180,000-250,000



PROPERTY FROM A PRIVATE COLLECTION

739

CAMILLE PISSARRO (1830-1903)

Port de Rouen

signed with initials 'C.P.' (lower right)
watercolor and pencil on paper laid down on board
12¼ x 24¼ in. (31.2 x 61.6 cm.) (irregular)

\$35,000-45,000

PROPERTY FROM A DISTINGUISHED PRIVATE COLLECTION

740

EDGAR DEGAS (1834-1917)

Danseuse, buste

stamped with signature 'Degas' (Lugt 658; lower left)
pastel counterproof heightened with pastel on paper
12¾ x 12¾ in. (32.8 x 32.1 cm.)
Executed circa 1897

\$250,000-350,000



PROPERTY FROM THE COLLECTION OF JOHN AND SALLY LEVY

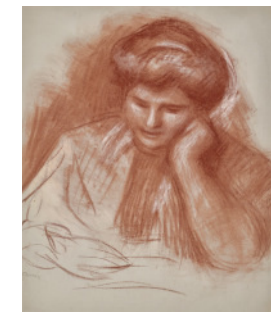
741

PIERRE-AUGUSTE RENOIR (1841-1919)

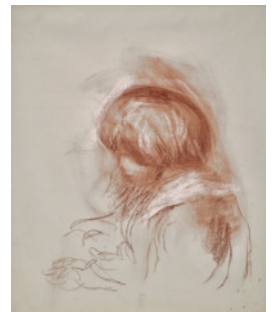
Gabrielle lisant (recto); Buste de Coco (verso)

signed 'Renoir' (lower left; recto); signed with initial 'R'
(lower right; verso)
sanguine and white chalk on paper
24¾ x 18¾ in. (61 x 47.8 cm.)
Drawn circa 1907

\$80,000-120,000



(recto)



(verso)

PROPERTY FROM THE COLLECTION OF JOHN AND SALLY LEVY

742

ÉDOUARD VUILLARD (1868-1940)

Nu assis dans l'atelier

signed 'E Vuillard' (lower left)
charcoal on paper
19¼ x 23¾ in. (49 x 60.8 cm.)
Drawn circa 1915

\$25,000-35,000





743

EDGAR DEGAS (1834-1917)

Deux femmes nues, les bras levés

stamped 'Degas' (Lugt 658; lower left)
charcoal counterproof on paper
25¼ x 16¾ in. (64.1 x 41.6 cm.)
Executed circa 1898-1900

\$20,000-30,000

746

EDGAR DEGAS (1834-1917)

Cheval

with atelier stamp (Lugt 657; on the reverse)
charcoal on paper
9¾ x 12¾ in. (24.7 x 31.4 cm.)

\$8,000-12,000



744

ÉDOUARD VUILLARD (1868-1940)

Madame Henri Kapferer et ses enfants

stamped with initials 'E.V.' (Lugt 909c; lower right)
pastel on paper
9¾ x 12¾ in. (24.9 x 32.2 cm.)
Drawn in 1926

\$15,000-20,000

747

MARC CHAGALL (1887-1985)

La rue de village

dated and inscribed in Cyrillic 'Liozno 09' (lower left)
gouache, watercolor and pencil on paper
11¼ x 14¾ in. (28.7 x 37.8 cm.)
Executed in 1909

\$150,000-200,000



745

EDGAR DEGAS (1834-1917)

Cheval

inscribed 'Sur petit pente près la barrière' (upper right); with atelier stamp (Lugt 657; on the reverse)
charcoal on paper
9½ x 12¼ in. (24.3 x 31.2 cm.)

\$8,000-12,000

748

ALBERTO GIACOMETTI (1901-1966)

Montagne à Stampa

signed and dated 'Alberto Giacometti 1957' (lower right)
pencil on paper
19¾ x 25¾ in. (50 x 65 cm.)
Drawn in 1957

\$50,000-70,000





PROPERTY FROM THE COLLECTION OF JOHN AND SALLY LEVY
749

HENRI MATISSE (1869-1954)

Les bras levés

signed 'Henri-Matisse' (lower right)
charcoal and estompe on paper
16 x 20¼ in. (40.6 x 51.3 cm.)
Executed in Nice in 1923

\$100,000-150,000

PROPERTY FROM THE JACQUELINE AND PIERRE SIMON COLLECTION
752

HENRI LAURENS (1885-1954)

SFA (Services Fabrications Aviation)

signed and dated 'H. LAURENS. 18' (lower right)
gouache and pencil on paper
9½ x 6¾ in. (24.1 x 16.9 cm.)
Executed in 1918

\$10,000-15,000



750

PABLO PICASSO (1881-1973)

Mercure: Etude pour le rideau de scène

bears signature
pastel and pencil on paper
7¾ x 8¾ in. (20 x 22.4 cm.)
Drawn circa 1924

\$60,000-80,000

753

HENRY MOORE (1898-1986)

*Reclining Figures: Ideas for Sculptures (recto);
Reclining Figures and Seated Figure (verso)*

inscribed 'Three main poses for sculpture. Horizontal — (Reclining Figures) Vertical — Standing Figures Right angle — Seated Figures. Each one can have elements of the others + between them they contain enough sculptural theme for twenty life-times.' (on the reverse)
watercolor, colored wax crayons, inkwash, pen and black ink and pencil on paper
7¼ x 10 in. (18.2 x 25.4 cm.)
Executed in 1942

\$20,000-30,000



751

JOAN MIRÓ (1893-1983)

Projet de couverture pour le livre "Atmosfera Miró"

gouache, brush and black ink on paper
8¾ x 8¾ in. (21.3 x 20.7 cm.)
Painted in 1959

\$100,000-150,000

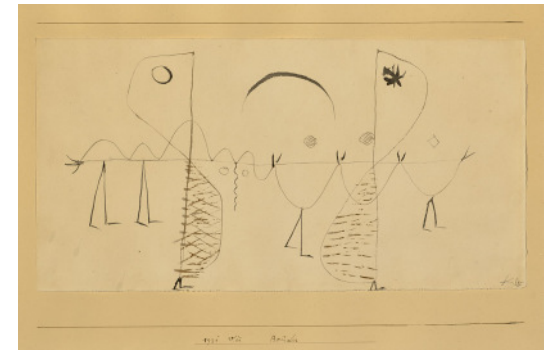
PROPERTY FROM THE COLLECTION OF JOHN AND SALLY LEVY
754

PAUL KLEE (1879-1940)

Brüder

signed 'Klee' (lower right); dated, numbered and titled '1931 vii Brüder' (on the artist's mount)
pen and black and brown inks on paper mounted on card
Sheet size: 7½ x 14½ in. (18.7 x 37 cm.)
Mount size: 19% x 25½ in. (49.8 x 64.6 cm.)
Drawn in 1931

\$15,000-20,000





755

JOAN MIRÓ (1893-1983)

Métamorphose

signed 'Miró' (center left); signed again, dated and titled 'Joan Miró. "Métamorphose" 23-/3/-4/4/36.' (on the reverse)
watercolor, inkwash, decal, brush and India ink and pencil on paper
25½ x 18¾ in. (64 x 47.8 cm.)
Executed 23 March-4 April 1936

\$400,000-600,000

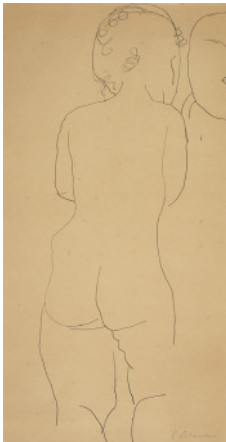
758

GEORGE GROSZ (1893-1959)

Patient (recto); Two Soldiers (verso)

signed and dated 'Grosz 37' (lower right); with Nachlass stamp (on the reverse)
watercolor and brush and India ink over pencil on paper
23¼ x 18½ in. (59 x 46 cm.)
Painted in 1937

\$15,000-20,000



PROPERTY FROM THE RUE WINTERBOTHAM CARPENTER COLLECTION

756

CONSTANTIN BRANCUSI (1876-1957)

Sans titre (Deux enfants)

signed 'C. Brancusi' (lower right)
pen and India ink on card
18¾ x 10 in. (48 x 25.3 cm.)
Drawn circa 1924

\$25,000-35,000

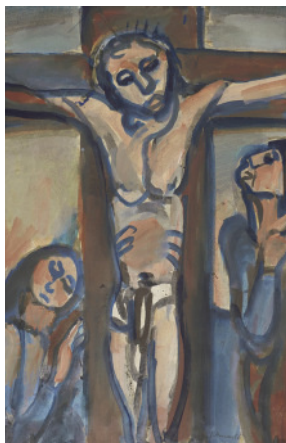
759

GEORGE GROSZ (1893-1959)

Downtown Manhattan

bears signature
watercolor on paper
18¾ x 11½ in. (47.5 x 29.5 cm.)
Painted in 1933

\$15,000-20,000



PROPERTY FROM THE RUE WINTERBOTHAM CARPENTER COLLECTION

757

GEORGES ROUAULT (1871-1958)

Christ en croix (esquisse)

signed 'G. Rouault' (lower right)
gouache on paper
15 x 10¾ in. (38 x 26.4 cm.)
Painted circa 1910-1919

\$15,000-20,000

760

GEORGE GROSZ (1883-1959)

Black Man, New York

signed twice 'Grosz' (lower right); with Nachlass stamp (on the reverse)
watercolor on paper
24¾ x 19½ in. (62.7 x 48.7 cm.)
Painted in 1933

\$12,000-18,000





761

MARC CHAGALL (1887-1985)

La fête au village

stamped with signature 'Marc Chagall' (lower right)
brush and pen and India ink and inkwash on Japan paper
12 $\frac{7}{8}$ x 19 $\frac{5}{8}$ in. (32.5 x 50 cm.)
Executed in 1971

\$80,000-120,000

PROPERTY FROM THE ESTATE OF SONDRA GILMAN

764

JULES PASCIN (1885-1930)

Miss Douglas

signed 'Pascin' (lower right) and inscribed 'N.3. Miss. Douglas.'
(lower left)
charcoal and estompe on paper
16 x 22 $\frac{7}{8}$ in. (40.6 x 58 cm.)
Drawn circa 1927-1928

\$1,000-1,500



PROPERTY FROM A DISTINGUISHED WEST COAST COLLECTION

762

RAOUL DUFY (1877-1953)

Chinon

signed, dated and titled 'Raoul Dufy 1937 Chinon' (lower right)
gouache, watercolor and brush and black ink on paper
20 $\frac{7}{8}$ x 25 $\frac{3}{4}$ in. (50.4 x 65.3 cm.)
Painted in 1937

\$50,000-70,000

765

RAOUL DUFY (1877-1953)

Nature morte à l'artichaut

signed 'Raoul Dufy' (lower right)
gouache and watercolor on paper
19 $\frac{3}{4}$ x 25 $\frac{3}{4}$ in. (50 x 65.3 cm.)

\$15,000-20,000



HIDDEN GEMS: THE COLLECTION OF DR. THOMAS CHUA

763

LÉONARD TSUGUHARU FOUJITA (1886-1968)

Deux académies d'hommes

signed, signed again in Japanese and dated 'Foujita 1928' (lower right)
black chalk and estompe and pencil on paper laid down on card
33 x 46 $\frac{1}{2}$ in. (83.8 x 117.6 cm.)
Executed in 1928

\$10,000-15,000

PROPERTY FROM THE COLLECTION OF JOHN AND SALLY LEVY

766

BALTHUS (1908-2001)

Nu au béret

signed and dated 'Balthus 63' (lower left)
pencil on paper
20 $\frac{1}{2}$ x 15 $\frac{3}{4}$ in. (51.7 x 40.2 cm.)
Drawn in 1963

\$20,000-30,000





PROPERTY FROM THE ELAINE AND PERRY J. SNYDERMAN COLLECTION

767

MARC CHAGALL (1887-1985)

Etude pour "Le Buveur" ou "Le Saoul"

signed 'Chagall.' (lower left)
inkwash and pencil on paper
6½ x 9¾ in. (16.5 x 25.2 cm.)
Executed in 1911-1912

\$15,000-20,000



PROPERTY FROM A PRIVATE ASIAN COLLECTION

768

HENRI MATISSE (1869-1954)

Vase Louis Philippe et anémones

signed with initials 'HM' (lower right)
pen and India ink on paper
17¼ x 22 in. (43.6 x 56 cm.)

\$40,000-60,000



PROPERTY FROM A DISTINGUISHED WEST COAST COLLECTION

769

RAOUL DUFY (1877-1953)

La ferme Louis XIII

signed 'Raoul Dufy' (lower right)
gouache and watercolor on paper
19¾ x 25¾ in. (50.2 x 65.4 cm.)
Painted in 1927

\$25,000-35,000

770

GEORGES ROUAULT (1871-1958)

Aux gueules cassées oubliées dans les barbelés de la Cité Dorée

signed and dated 'G Rouault 1930' (lower center)
gouache, pastel, brush and India ink on paper
13¾ x 11¾ in. (34.5 x 29.5 cm.)
Executed in 1930

\$20,000-30,000



PROPERTY FROM A PRIVATE COLLECTION

771

ANDRÉ DERAIN (1880-1954)

Personnage bras levés

with atelier stamp (lower right)
watercolor on paper
9¾ x 6½ in. (24.8 x 16.5 cm.)

\$800-1,000



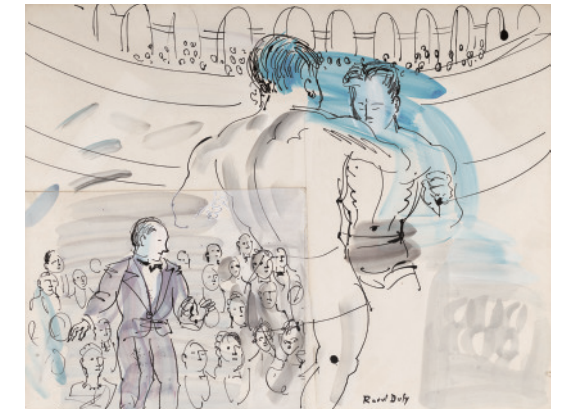
772

RAOUL DUFY (1877-1953)

Etude pour "le combat de boxe de Primo Carnera à l'Albert-Hall de Londres en 1930"

signed 'Raoul Dufy' (lower right)
gouache, watercolor and pen and black ink on joined paper
20 x 25¾ in. (50.8 x 66 cm.)
Executed in 1930

\$8,000-12,000





**IMPRESSIONIST AND MODERN
DAY SALE**

Saturday 14 May 2022
2:00 pm (Lots 801-931)

Scan to view
full auction online





AN ENQUIRING EYE: PROPERTY FROM A DISTINGUISHED PRIVATE COLLECTOR

801

EDGAR DEGAS (1834-1917)

Cheval caracolant

stamped with signature, numbered and stamped with foundry mark 'Degas 65/B AA HEBRARD CIRE PERDUE' (Lugt 658; on the top of the base)

bronze with brown patina

Height: 10¼ in. (26 cm.)

Width: 10½ in. (26.6 cm.)

Original wax model executed circa 1885-1889; this bronze version cast by 1921 in an edition numbered A to T plus two casts reserved for the Degas heirs and the founder Hébrard marked HER.D and HER, respectively

\$30,000-50,000



PROPERTY FROM A FAMILY FOUNDATION

802

EUGÈNE BOUDIN (1824-1898)

Trouville, voiliers échoués

signed 'E. Boudin' (lower right)

oil on panel

12¾ x 9¾ in. (32.4 x 23.8 cm.)

Painted circa 1883-1887

\$40,000-60,000



803

LEO GAUSSON (1860-1944)

Paysage aux environs de Lagny, l'église de Conches

signed and dated 'Leo Gausson 1887' (lower left)

oil on canvas

15 x 18½ in. (38.1 x 46.1 cm.)

Painted in 1887

\$12,000-18,000

804

PIERRE-AUGUSTE RENOIR (1841-1919)

Poissons

stamped with signature 'Renoir.' (Lugt 2137b; lower right)

oil on canvas

5½ x 8¾ in. (13.1 x 21.3 cm.)

Painted in 1914-1915

\$60,000-80,000



805

GUSTAVE LOISEAU (1865-1935)

Pont-Aven

signed and dated 'G Loiseau 1922' (lower left)

oil on canvas

25¾ x 21¼ in. (65.2 x 54 cm.)

Painted in Pont-Aven in 1922

\$70,000-100,000



PROPERTY FROM A PRIVATE CALIFORNIA COLLECTION

806

THÉO VAN RYSELBERGHE (1862-1926)

Eucalyptus à Cavalière

signed with monogram and dated '1905' (lower left)

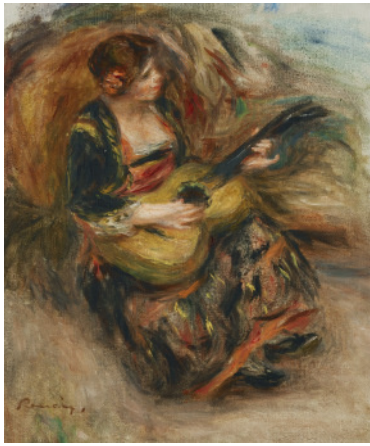
oil on canvas

39¾ x 32½ in. (100.7 x 81.6 cm.)

Painted in 1905

\$250,000-350,000





PROPERTY OF THE FAMILY OF PETER GOODMAN

807

PIERRE-AUGUSTE RENOIR (1841-1919)

Jeune femme assise jouant de la guitare

signed 'Renoir.' (lower left)
oil on canvas
14 7/8 x 12 1/4 in. (37.2 x 31.1 cm.)
Painted in 1898-1900

\$250,000-350,000



808

GEORGES SEURAT (1859-1891)

Ouvriers enfonçant des pieux

oil on panel
6 x 9 1/2 in. (15.2 x 24.8 cm.)
Painted circa 1881

\$400,000-600,000



PROPERTY FROM A PRIVATE EAST COAST COLLECTION

809

ARISTIDE MAILLOL (1861-1944)

Femme agenouillée ou Femme accroupie

signed with monogram (on the top of the base); inscribed with foundry mark 'Alexis Rudier, Fondateur Paris' (on the back of the base)
bronze with dark brown patina
Height: 6 in. (15.2 cm.)
Length: 9 in. (22.8 cm.)
Conceived in 1930

\$70,000-100,000



810

PIERRE-AUGUSTE RENOIR (1841-1919)

L'église à Essoyes

oil on canvas
9 7/8 x 12 in. (25 x 30.6 cm.)
Painted in Essoyes circa 1900

\$400,000-600,000



811

ARMAND GUILLAUMIN (1841-1927)

Village sur le coteau, vallée de Chevreuse

signed and dated 'Guillaumin 85' (lower right)
oil on canvas
35 x 45 5/8 in. (88.9 x 115.9 cm.)
Painted in 1885

\$60,000-80,000



PROPERTY FROM AN IMPORTANT PRIVATE FRENCH COLLECTION

812

ALFRED SISLEY (1839-1899)

Femme et enfant sur le chemin des près, Sèvres

signed 'Sisley' (lower right)
oil on canvas
14 7/8 x 21 7/8 in. (37.7 x 55.5 cm.)
Painted circa 1879

\$400,000-600,000



PROPERTY OF THE FAMILY OF PETER GOODMAN SOLD TO BENEFIT VOLUNTEERS IN MEDICINE BERKSHIRES, INC.

813

EDGAR DEGAS (1834-1917)

Femme assise dans un fauteuil, s'essuyant la hanche gauche

stamped with signature 'Degas' (Lugt 658; on the top of the base); numbered and stamped with foundry mark '54/B AA HEBRARD CIRE PERDUE' (on the front)

bronze with reddish-brown patina
Height: 17¾ in. (45 cm.)

Conceived *circa* 1896-1911; this bronze version cast by 1921 in an edition numbered A to T, plus two casts reserved for the Degas heirs and the founder Hébrard marked HER.D and HER respectively

\$250,000-350,000

PROPERTY FROM A FAMILY FOUNDATION

816

ACHILLE LAUGÉ (1861-1944)

Vue des quais de la Garonne

signed 'A. Laugé' (lower right)
oil on panel

19¾ x 28¾ in. (50.5 x 73.4 cm.)
Painted *circa* 1915-1925

\$18,000-25,000



PROPERTY FROM THE HOROWITZ FAMILY COLLECTION, ATLANTA

°814

CAMILLE PISSARRO (1830-1903)

L'Anse des Pilotes, après-midi, temps ensoleillé, Le Havre

signed and dated 'C. Pissarro. 1903' (lower center)
oil on canvas

18½ x 21¾ in. (47 x 55.3 cm.)
Painted in 1903

\$1,200,000-1,800,000

PROPERTY FROM A PRIVATE AMERICAN COLLECTION

817

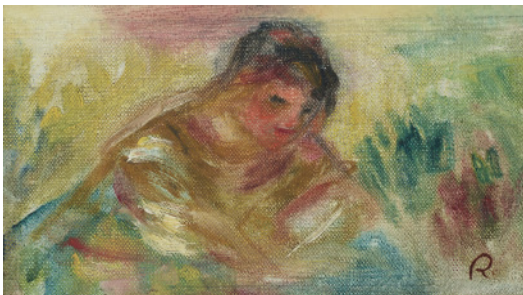
FRANCIS PICABIA (1879-1953)

Les oliviers, effet de soleil aux Martigues

signed and dated 'Picabia 1905' (lower left)
oil on canvas

28¾ x 36¼ in. (73 x 92 cm.)
Painted in 1905

\$400,000-600,000



815

PIERRE-AUGUSTE RENOIR (1841-1919)

Buste de femme (fragment)

stamped with initial 'R.' (lower right)
oil on canvas laid down on panel

4¾ x 7¾ in. (10.6 x 18.8 cm.)
Painted in 1916

\$40,000-60,000

PROPERTY FROM AN IMPORTANT PRIVATE FRENCH COLLECTION

818

JEAN-BAPTISTE CAMILLE COROT (1796-1875)

Le gros arbre (environs de Gournay)

signed 'COROT' (lower left)
oil on canvas

15 x 22 in. (38.1 x 55.8 cm.)
Painted in 1865-1870

\$200,000-300,000





PROPERTY FROM A PROMINENT CHICAGO COLLECTION
819

HENRI FANTIN-LATOURE (1836-1904)

Nature morte à la tasse de café

signed and dated 'Fantin.1865.' (lower right)
oil on canvas
18 $\frac{7}{8}$ x 15 $\frac{1}{8}$ in. (47.6 x 39.5 cm.)
Painted in 1865

\$700,000-1,000,000

822

PAUL SÉRUSIER (1863-1927)

Les porteuses de sacs

signed 'P. Sérusier' (lower left)
oil on canvas
29 x 23 $\frac{3}{8}$ in. (73.6 x 60.6 cm.)
Painted in 1891-1893

\$120,000-180,000



PROPERTY FROM A FAMILY FOUNDATION
820

FERDINAND DU PUIGAUDEAU (1864-1930)

Bretonnes aux lampions à Notre-Dame-de-Trémalo (Pont-Aven)

signed 'F. du Puigaudeau.' (lower left)
oil on canvas
23 $\frac{3}{8}$ x 28 $\frac{3}{4}$ in. (60.1 x 73 cm.)
Painted circa 1895-1898

\$25,000-35,000

PROPERTY FROM A PRIVATE WEST COAST COLLECTION
823

ÉDOUARD VUILLARD (1868-1940)

Enfant avec gobelet

signed 'E. Vuillard' (upper left)
oil on board laid down on cradled panel
19 $\frac{1}{8}$ x 24 $\frac{1}{2}$ in. (48.6 x 62.3 cm.)
Painted in 1900-1901

\$400,000-600,000



HIDDEN GEMS: THE COLLECTION OF DR. THOMAS CHUA
821

PAUL SÉRUSIER (1863-1927)

Fragment décor, têtes ou Une distribution des Pentacles

signed and dated 'P Sérusier 20' (lower right)
oil on canvas
36 x 28 $\frac{1}{2}$ in. (91.5 x 72.4 cm.)
Painted in 1922

\$50,000-70,000

PROPERTY FROM A DISTINGUISHED PRIVATE JAPANESE COLLECTION
824

PIERRE-AUGUSTE RENOIR (1841-1919)

Tête de femme blonde

signed 'Renoir.' (upper right)
oil on canvas
10 $\frac{1}{4}$ x 7 $\frac{1}{2}$ in. (26.1 x 19 cm.)
Painted in 1908

\$200,000-300,000





PROPERTY FROM A PRIVATE ATLANTA COLLECTION

825

CAMILLE PISSARRO (1830-1903)

Gelée blanche à Eragny

signed and dated 'C. Pissarro. 1902' (lower right)

oil on canvas

16¼ x 13⅞ in. (41.3 x 33.3 cm.)

Painted in 1902

\$200,000-300,000

828

GUSTAVE LOISEAU (1865-1935)

Rue de village en Normandie

signed 'G. Loiseau' (lower left)

oil on canvas

18⅞ x 21¼ in. (46.6 x 55.3 cm.)

\$50,000-70,000



PROPERTY FROM THE COLLECTION OF JOHN W. KLUGE SOLD TO BENEFIT COLUMBIA UNIVERSITY

826

ARISTIDE MAILLOL (1861-1944)

Baigneuse aux bras levés

signed with monogram (on the top of the base); inscribed with foundry mark 'Alexis Rudier. Fondateur Paris.' (on the back of the base)

bronze with brown and green patina

Height: 61 in. (155 cm.)

Conceived in 1930; this bronze version cast between 1944-1952

\$600,000-900,000

PROPERTY FROM A PRIVATE FRENCH COLLECTION

829

ALFRED SISLEY (1839-1899)

Le pont du chemin de fer

signed 'Sisley.' (lower left)

oil on canvas

18¼ x 21⅞ in. (46.3 x 55.6 cm.)

Painted circa 1880

\$500,000-700,000



PROPERTY FROM A PRIVATE ATLANTA COLLECTION

827

PIERRE-AUGUSTE RENOIR (1841-1919)

Nu assis

signed 'Renoir' (lower left)

oil on canvas

12% x 13¾ in. (32.2 x 34.9 cm.)

Painted circa 1900-1902

\$250,000-350,000

830

BLANCHE HOSCHEDÉ-MONET (1865-1947)

Les grands arbres au bassin (Giverny)

signed 'Hoschedé Monet' (lower left)

oil on canvas

36% x 32 in. (93 x 81.3 cm.)

Painted circa 1928

\$40,000-60,000





PROPERTY FROM THE COLLECTION OF HERBERT AND ADELE KLAPPER

831

AUGUSTE RODIN (1840-1917)

Éternel printemps, premier état, taille original - variante type C

signed and stamped with foundry mark 'A. Rodin MERONI RADICE PARIS CIRE PERDUE' (on the right side)
bronze with brown patina
Height: 26½ in. (66.5 cm.)
Conceived in 1884; this bronze version cast between 1921 and 1923

\$500,000-700,000



832

EDOUARD VUILLARD (1868-1940)

Nature morte à la lampe

stamped with signature 'E Vuillard' (Lugt 2497a; lower right)
oil on canvas
6½ x 7¾ in. (16.6 x 18.8 cm.)
Painted circa 1888

\$35,000-45,000



PROPERTY FROM A PRESTIGIOUS PRIVATE FRENCH COLLECTION

833

CAMILLE PISSARRO (1830-1903)

Julie Pissarro épluchant des légumes

signed and dated 'C. Pissarro 78' (lower right)
oil on canvas
18½ x 21¼ in. (46.3 x 55.6 cm.)
Painted in 1878

\$600,000-900,000

THE COLLECTION OF SALVADOR AND CHRISTINA LANG ASSAËL

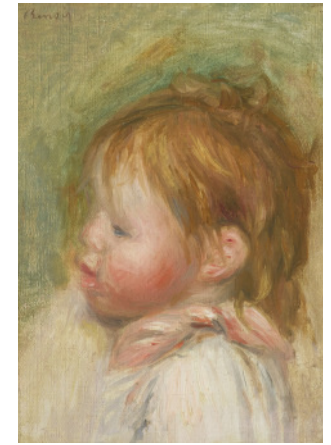
834

PIERRE-AUGUSTE RENOIR (1841-1919)

Jean Renoir enfant

signed 'Renoir' (upper left)
oil on canvas
10¾ x 7½ in. (27.3 x 19 cm.)
Painted in 1896

\$120,000-180,000



THE COLLECTION OF SALVADOR AND CHRISTINA LANG ASSAËL

835

CLAUDE MONET (1840-1926)

Soleil couchant, temps brumeux, Pourville

signed and dated 'Claude Monet 82' (lower left)
oil on canvas
24¼ x 29¼ in. (61.5 x 74.3 cm.)
Painted in 1882

\$2,500,000-3,500,000



THE COLLECTION OF SALVADOR AND CHRISTINA LANG ASSAËL

836

LUCIEN PISSARRO (1863-1944)

Brough, Misty Afternoon

signed with monogram and dated '1914' (lower right)
oil on canvas
23¾ x 28¾ in. (60.4 x 73 cm.)
Painted in 1914

\$18,000-25,000





THE COLLECTION OF SALVADOR AND CHRISTINA LANG ASSAËL
837

EDGAR DEGAS (1834-1917)

Grande arabesque, premier temps

stamped with signature and foundry mark and numbered 'Degas 18/Q A.A. HÉBRARD CIRE PERDUE' (Lugt 658; on the top of the base)
bronze with dark brown patina
Height: 19½ in. (48.6 cm.)

Original wax model executed in 1885-1890; this bronze version cast in an edition numbered A to T, plus two casts reserved for the Degas heirs and the founder Hébrard, marked HER.D and HER respectively

\$150,000-250,000

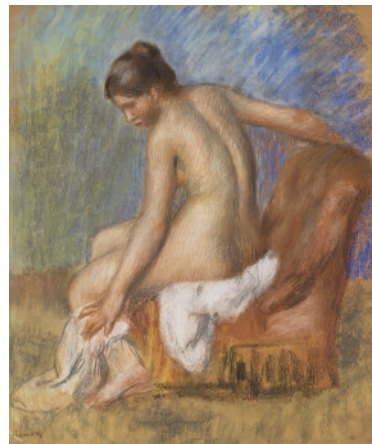
THE COLLECTION OF SALVADOR AND CHRISTINA LANG ASSAËL
840

LOUIS VALTAT (1869-1952)

Femme au fauteuil

stamped with signature 'L. Valtat' (Lugt 2479bis; lower right)
oil on canvas
28¾ x 36¾ in. (73.4 x 92.4 cm.)
Painted in 1918

\$40,000-60,000



THE COLLECTION OF SALVADOR AND CHRISTINA LANG ASSAËL
838

PIERRE-AUGUSTE RENOIR (1841-1919)

Nu au fauteuil

signed 'Renoir' (lower left)
pastel on paper
24¾ x 20¾ in. (61.8 x 52.2 cm.)
Drawn circa 1885-1890

\$800,000-1,200,000

THE COLLECTION OF SALVADOR AND CHRISTINA LANG ASSAËL
841

MOÏSE KISLING (1891-1953)

Port de Marseille

signed 'Kisling' (lower left)
oil on panel
21½ x 17¾ in. (54.6 x 45.5 cm.)
Painted in 1930

\$50,000-70,000



THE COLLECTION OF SALVADOR AND CHRISTINA LANG ASSAËL
839

CAMILLE PISSARRO (1830-1903)

Mère et enfant

stamped with initials 'C.P.' (Lugt 613e; lower right)
charcoal and pencil on paper
14¾ x 11¼ in. (37.3 x 28.6 cm.)
Drawn in 1878

\$10,000-15,000

THE COLLECTION OF SALVADOR AND CHRISTINA LANG ASSAËL
842

ANDRÉ BRASILLIER (B. 1929)

Forêt tricolore

signed 'André Brasillier' (lower right)
oil on canvas
9½ x 13¾ in. (24 x 35 cm.)
Painted in 1995

\$8,000-12,000





PROPERTY FROM AN EAST COAST COLLECTION
843

BERNARD BUFFET (1928-1999)

Nature morte fond rouge

signed 'Bernard Buffet' (upper left)
oil on masonite
13 x 16½ in. (33 x 41 cm.)
Painted in 1983

\$40,000-60,000



PROPERTY FROM AN EAST COAST COLLECTION
844

GEORGES BRAQUE (1882-1963)

Deux poires

signed 'G Braque' (lower right)
oil on canvas
9¾ x 14½ in. (25 x 35.9 cm.)
Painted in 1954

\$40,000-60,000



PROPERTY FROM A PRESTIGIOUS PRIVATE COLLECTION
845

MARC CHAGALL (1887-1985)

Le Peintre

signed 'Marc Chagall' (lower right); signed again 'Marc Chagall'
(on the reverse)
oil on canvas
25½ x 21 in. (64.9 x 54.2 cm.)
Painted in 1976

\$700,000-1,000,000



846

RAOUL DUFY (1877-1953)

L'Eucalyptus

signed 'Raoul Dufy' (lower right)
oil on canvas
21¾ x 18½ in. (55.3 x 46 cm.)
Painted circa 1926

\$100,000-150,000



PROPERTY FROM A PROMINENT PRIVATE COLLECTION
847

HENRI MATISSE (1869-1954)

Port de Marseille

signed 'H Matisse' (lower right)
oil on cradled panel
11 x 14½ in. (28 x 36 cm.)
Painted in 1917

\$300,000-500,000



848

AUGUSTE HERBIN (1882-1960)

Chêne-liège à Vaison-la-Romaine

signed 'herbin' (lower right)
oil on canvas
39½ x 28½ in. (100.4 x 72.4 cm.)
Painted in 1924

\$50,000-70,000



849

LOUIS VALTAT (1869-1952)

Anémones au pichet vert sur fond bordeaux

signed 'L. Valtat' (lower right)
oil on canvas
14 x 10 $\frac{1}{2}$ in. (35.6 x 27 cm.)
Painted circa 1923

\$20,000-30,000



850

HENRI LEBASQUE (1865-1937)

Femme au jardin

signed 'Lebasque.' (lower right)
oil on canvas
21 $\frac{3}{4}$ x 18 $\frac{1}{2}$ in. (55.3 x 46 cm.)

\$30,000-50,000



851

PIERRE BONNARD (1867-1947)

Le lever, les bas

stamped with signature 'Bonnard' (Lugt 3886; lower right)
oil on canvas
21 $\frac{1}{4}$ x 20 $\frac{3}{4}$ in. (54 x 52.7 cm.)
Painted circa 1906-1910

\$60,000-80,000



852

HENRI MARTIN (1860-1943)

Barques à Collioure (le 14 Juillet)

signed 'Henri Martin.' (lower left)
oil on board laid down on panel
17 $\frac{1}{2}$ x 21 $\frac{1}{2}$ in. (45.5 x 55 cm.)

\$80,000-120,000



853

CHARLES CAMOIN (1879-1965)

Le Port de Saint-Tropez après l'orage

signed 'Ch Camoin' (lower left)
oil on canvas
23 $\frac{3}{4}$ x 36 $\frac{1}{4}$ in. (60.3 x 92.1 cm.)
Painted circa 1930

\$50,000-70,000

854

AUGUSTE RODIN (1840-1917)

Toilette de Vénus

signed, dated and inscribed 'A. Rodin © by musée Rodin 1967' (on the right side); inscribed with foundry mark 'Georges Rudier. Fondateur Paris.' (on the back of the base); with raised signature 'A. Rodin' (on the underside)
bronze with brown and green patina
Height: 18 $\frac{1}{2}$ in. (46.7 cm.)
Conceived circa 1890; this bronze version cast in 1967

\$40,000-60,000





SOLD BY THE ART INSTITUTE OF CHICAGO

855

ÉDOUARD VUILLARD (1868-1940)

Jeanne Louise Guérin

signed 'E. Vuillard' (lower right)
peinture à la colle on paper laid down on canvas
70¼ x 48 in. (178.5 x 122 cm.)
Painted in 1916-1917

\$400,000-600,000



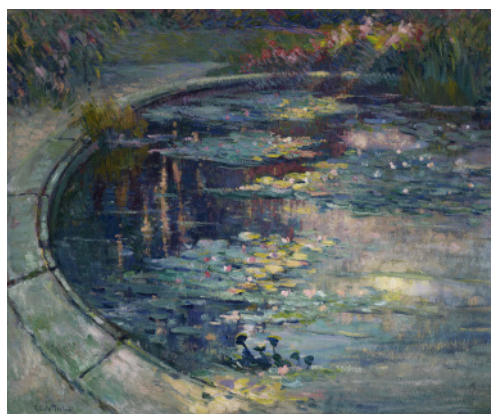
856

LOUIS VALTAT (1869-1952)

Cruche verte, dahlias et fleurs

stamped with initials 'L.V.' (lower right)
oil on canvas
21¾ x 15 in. (55.7 x 38.2 cm.)
Painted in 1929

\$30,000-50,000



857

ROBERT PINCHON (1886-1943)

Le bassin aux nymphéas au jardin des plantes à Rouen

signed 'Robert A Pinchon' (lower left)
oil on canvas
28¾ x 34½ in. (73.1 x 87.6 cm.)

\$20,000-30,000



858

GUSTAVE CARIOT (1872-1950)

Vue de Schlangenbad

signed and dated 'G. Cariot 1944' (lower right)
oil on canvas laid down on board
20¾ x 16¾ in. (51.1 x 41.6 cm.)
Painted in 1944

\$6,000-8,000



859

YVONNE CANU (1921-2008)

Sur le Nil

signed 'canu' (lower left); signed again and titled 'y. Canu. Sur le Nil' (on the reverse)
oil on canvas
15 x 21¾ in. (38.1 x 54.9 cm.)
Painted in 1991

\$8,000-12,000



860

ARMAND GUILLAUMIN (1841-1927)

Pâturages des granges, Crozant

signed 'Guillaumin' (lower right); dated '1914' (on the stretcher)
oil on canvas
23¾ x 31¾ in. (60 x 81 cm.)
Painted in 1914

\$25,000-30,000



861

AUGUSTE RODIN (1840-1917)

Enfants au lézard

signed 'A. Rodin' (on the right side of the base); inscribed with foundry mark and dated 'Georges Rudier . Fondeur . Paris . © by musée Rodin 1964.' (on the back of the base); with raised signature 'A. Rodin' (on the underside)
bronze with brown and green patina
Height: 15¼ in. (38.7 cm.)
Conceived *circa* 1886; this bronze version cast in 1964

\$30,000-40,000

864

AUGUSTE RODIN (1840-1917)

Le Jongleur

signed, inscribed with foundry mark and dated 'A. Rodin .Georges Rudier. .Fondeur Paris. © by musée Rodin 1959.' (on the underside)
bronze with dark brown and green patina
Height: 10¾ in. (27.3 cm.)
Conceived *circa* 1892-1895; this bronze version cast in 1959

\$25,000-35,000



862

ANDRÉ HAMBourg (1908-1999)

Marée haute, grosse mer

signed 'a.hambourg' (lower left); signed again with initials, dated and titled 'a.h. 1963 "marée haute grosse mer"' (on the reverse)
oil on canvas
77½ x 19¾ in. (20 x 50.2 cm.)
Painted in 1963

\$6,000-8,000

PROPERTY FROM THE COLLECTION OF ARNOLD AND DOROTHY NEUSTADTER

865

KEES VAN DONGEN (1877-1968)

Danseuse assise

signed 'van Dongen.' (lower left)
oil on canvas
26 x 22 in. (66 x 55.8 cm.)
Painted *circa* 1952

\$200,000-300,000



HIDDEN GEMS: THE COLLECTION OF DR. THOMAS CHUA

863

ARMAND GUILLAUMIN (1841-1927)

Les Dunes, Ile de Ré

signed 'Guillaumin' (lower left)
oil on canvas
15¼ x 25½ in. (40 x 65.1 cm.)
Painted *circa* 1892

\$12,000-18,000

866

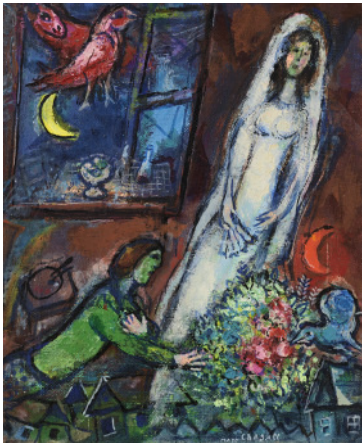
MAURICE UTRILLO (1883-1955)

14 juillet à Montmartre

signed 'Maurice, Utrillo, V.' (lower right) and inscribed 'Montmartre,-' (lower left)
oil on board laid down on board
9¼ x 12¾ in. (23.6 x 31.5 cm.)
Painted *circa* 1948

\$50,000-70,000





PROPERTY FROM A PRIVATE ASIAN COLLECTION

867

MARC CHAGALL (1887-1985)

La mariée au bouquet devant la fenêtre

signed 'Marc Chagall' (lower right); signed again 'Marc Chagall' (on the stretcher)
oil, tempera and brush and India ink on canvas
14½ x 11¾ in. (36.8 x 30.2 cm.)
Painted in 1957

\$350,000-450,000



868

MAURICE UTRILLO (1883-1955)

La Cathédrale de Chartres (Eure-et-Loir)

signed 'Maurice Utrillo.V.' (lower left)
oil on canvas
36½ x 25¾ in. (92.6 x 65.2 cm.)
Painted circa 1912-1914

\$300,000-500,000



869

GEORGES BRAQUE (1882-1963)

Huitres et couteau

signed and dated 'G Braque 38' (lower left)
oil on panel
7¾ x 8¾ in. (19.4 x 22.6 cm.)
Painted in 1938

\$40,000-60,000



870

MAURICE DE VLAMINCK (1876-1958)

Jetée de chrysanthèmes

signed 'Vlaminck' (lower right)
oil on canvas
28¾ x 23¾ in. (73 x 60 cm.)
Painted circa 1910-1912

\$40,000-60,000



871

CHAÏM SOUTINE (1893-1943)

Paysage

signed 'C. Soutine' (lower right)
oil on canvas
18 x 21½ in. (46 x 54.6 cm.)
Painted circa 1939

\$180,000-250,000



HIDDEN GEMS: THE COLLECTION OF DR. THOMAS CHUA

872

MAX PECHSTEIN (1881-1955)

Rettungshaus in den Dünen

signed 'HMPechstein' (lower left)
oil on board
18¾ x 15¼ in. (48 x 38.7 cm.)
Painted in 1920

\$70,000-100,000

873 No Lot



874

PIET MONDRIAN (1872-1944)

Drie Chrysanten

oil on canvas laid down on board
9 5/8 x 13 3/8 in. (24.5 x 34 cm.)
Painted circa 1899-1900

\$50,000-70,000



PROPERTY FROM A PROMINENT PRIVATE COLLECTION

875

PIET MONDRIAN (1872-1944)

Twee boom silhouetten achter een waterloop

signed 'PIET MONDRIAN' (lower left)
oil on canvas laid down on board
18 1/2 x 14 1/8 in. (47 x 35.9 cm.)
Painted in 1900-1902

\$100,000-150,000



876

GEORG KOLBE (1877-1947)

Statuette II (Statuette aufsteigendes Weib)

signed with monogram (on the top of the base); stamped with foundry mark 'H.NOACK BERLIN FRIEDENAU' (on the side of the base)
bronze with brown patina
Height: 16 1/8 in. (41 cm.)
Conceived in 1921; this bronze version cast in 1921-1922

\$40,000-60,000

877

PABLO PICASSO (1881-1973)

Femme debout

numbered '8/10' (on the top of the base); stamped with foundry mark 'C. VALSUANI CIRE PERDUE' (on the back of the base)
bronze with dark brown patina
Height: 7 1/2 in. (19 cm.)
Conceived in 1945

\$70,000-90,000



PROPERTY FROM A FAMILY FOUNDATION

878

FERNAND LÉGER (1881-1955)

Composition à la petite flamme rouge

signed with initials 'F.L.' (lower right); titled, numbered and stamped 'COMPOSITION À LA PETITE FLAMME ROUGE 2/8 R.B ATELIERS BRICE CERAMISTES DE F. LEGER BIOT A.M.' (on the reverse)
white earthenware ceramic relief with colored engobe and glaze
25 1/4 x 14 1/8 in. (64.1 x 36.2 cm.)
Conceived and executed circa 1952

\$25,000-35,000



PROPERTY FROM THE COLLECTION OF JOHN W. KLUGE
SOLD TO BENEFIT COLUMBIA UNIVERSITY

879

HENRY MOORE (1898-1986)

Helmet Head No. 6

signed and numbered 'Moore 8/9' (on the top of the base)
bronze with brown patina
Height: 17 1/4 in. (43.8 cm.)
Width: 17 in. (43.2 cm.)
Depth: 21 1/8 in. (54.4 cm.)
Conceived in 1975

\$120,000-180,000





880

GEORGES VALMIER (1885-1937)

Sans titre

signed and dated 'G. VALMIER 1929' (lower right)
oil on canvas
15½ x 47¾ in. (38.5 x 120.4 cm.)
Painted in 1929

\$40,000-60,000



PROPERTY FROM A DISTINGUISHED AMERICAN ESTATE

881

JACQUES LIPCHITZ (1891-1971)

La Liseuse II

signed, numbered and marked with artist's thumbprint 'J Lipchitz 4/7'
(on the back)
bronze with golden brown patina
Height: 30¼ in. (76.8 cm.)
Conceived in 1919

\$300,000-500,000



PROPERTY FROM A FAMILY FOUNDATION

882

FERNAND LÉGER (1881-1955)

Femmes aux perroquets

signed and dated 'F. LEGER 52' (lower right)
partially glazed white earthenware ceramic relief with colored engobe
40½ x 35 in. (103 x 88.8 cm.)
Conceived and executed in 1952; unique

\$300,000-500,000

PROPERTY FROM A PRIVATE ASIAN COLLECTION

883

ALEXANDER ARCHIPENKO (1887-1964)

Woman Combing Her Hair

signed, dated, numbered and with the artist's mark 'Archipenko 1915
12/12' (on the top of the base)
bronze with black patina
Height: 13¾ in. (34.9 cm.)
Conceived in 1915; this bronze version cast in 1961

\$50,000-70,000



PROPERTY FROM AN IMPORTANT PRIVATE COLLECTION

884

JOAQUÍN TORRES-GARCÍA (1874-1949)

Estructura con formas trabadas

signed 'J. Torres-GARCIA' (lower left) and dated '33' (lower right)
tempera on board
29½ x 20¾ in. (75 x 52.8 cm.)
Painted in 1933

\$800,000-1,200,000



PROPERTY FROM A FAMILY FOUNDATION

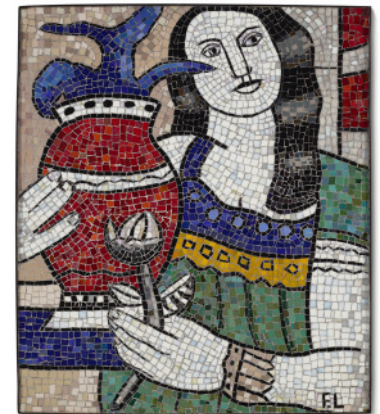
885

AFTER FERNAND LÉGER (1881-1955)

Femme au vase rouge

signed with initials 'F.L.' (lower right)
glass mosaic set in a steel frame
45½ x 39¾ in. (116 x 100 cm.)
Executed in the 1960s by Heidi Melano; unique

\$120,000-180,000





PROPERTY FROM A PRIVATE COLLECTION

886

OSSIP ZADKINE (1890-1967)

Mère et enfant allongés ou Repos ou Tendresse maternelle

signed, numbered and stamped with foundry mark 'ZADKINE 7/10 BISCEGLIA CIRE PERDUE' (on the back)
bronze with brown patina
Length: 11½ in. (28.2 cm.)
Height: 3¾ in. (9.8 cm.)
Conceived circa 1960

\$8,000-10,000



PROPERTY FROM A PRIVATE COLLECTION

887

OSSIP ZADKINE (1890-1967)

La rêveuse ou Filette assise

signed with initials, numbered and stamped with foundry mark 'OZ 2/5 SUSSE F. PARIS CIRE PERDUE' (on the back)
bronze with brown and green patina
Height: 6¼ in. (15.9 cm.)
Conceived in 1952; this bronze version cast in 1961

\$7,000-10,000



888

JEAN METZINGER (1883-1956)

Baigneuses

signed 'JMetzinger' (lower right)
oil on canvas
36¼ x 25½ in. (92.1 x 64.8 cm.)
Painted in 1924

\$50,000-70,000

889

JEAN METZINGER (1883-1956)

Arlequin

signed 'JMetzinger' (lower right)
oil on canvas
63½ x 44¾ in. (161.3 x 113.7 cm.)
Painted in 1922

\$70,000-100,000



PROPERTY FROM THE COLLECTION OF YVES PLANTIN

890

TAMARA DE LEMPICKA (1898-1980)

La carafe Louis-Philippe

stamped with signature 'T. DE LEMPICKA' (lower right)
oil on canvas
13¾ x 10¾ in. (35.3 x 27.4 cm.)
Painted in 1923

\$25,000-35,000



PROPERTY FROM THE ESTATE OF DINO AND MARTHA DE LAURENTIIS

891

GIORGIO MORANDI (1890-1964)

Natura morta

signed 'Morandi' (on the reverse)
oil on canvas
12½ x 13¾ in. (30.8 x 35.3 cm.)
Painted in 1962

\$400,000-600,000





PROPERTY FROM THE COLLECTION OF JOHN W. KLUGE
SOLD TO BENEFIT COLUMBIA UNIVERSITY

892

GIACOMO MANZÙ (1908-1991)

Cardinale

stamped with signature and foundry mark
'MANZÙ FONDERIA MAF MILANO' (on the back)
bronze with brown patina
Height: 31½ in. (80 cm.)
Width: 24½ in. (62.2 cm.)
Depth: 19½ in. (49.5 cm.)

\$60,000-80,000



893

GIACOMO MANZÙ (1908-1991)

Pittore e modella

with raised signature and foundry mark 'Manzù NFMM'
(on the top of the base)
bronze with brown patina
Height: 22¾ in. (56.7 cm.)
Length: 25 in. (63.5 cm.)
Conceived and cast in 1962-1965; unique

\$20,000-30,000



PROPERTY FROM A PROMINENT PRIVATE COLLECTION

894

GIORGIO DE CHIRICO (1888-1978)

Cavallo fuggente

signed 'G. de Chirico' (lower right)
oil on canvas
16 x 20¼ in. (40.7 x 51.5 cm.)
Painted circa 1938

\$100,000-150,000

PROPERTY FROM THE DISTINGUISHED COLLECTION OF
MARGARET AND WERNER JOSTEN

895

MARINO MARINI (1901-1980)

Piccolo cavaliere

with raised initials and numbered 'M.M 5/6' (on the top of the base)
bronze with brown patina, hand-chiseled and painted by the artist
Height: 15¾ in. (40 cm.)
Conceived in 1950

\$600,000-800,000



PROPERTY FROM THE COLLECTION OF PAUL MATISSE

896

ALBERTO GIACOMETTI (1901-1966)

Lampe 'Flambeau' (petit modèle)

bronze with green and brown patina
Height: 27¾ in. (70.5 cm.)
Conceived circa 1934

\$60,000-80,000



PROPERTY FROM THE COLLECTION OF PAUL MATISSE

897

ALBERTO GIACOMETTI (1901-1966)

Lampe 'Grecque' (grand modèle)

bronze with brown and green patina
Height: 30¾ in. (78.1 cm.)
Conceived circa 1937

\$100,000-150,000





PROPERTY FROM AN AMERICAN COLLECTION

898

ALBERTO GIACOMETTI (1901-1966)

Coupe oblongue

bronze with green and brown patina
Height: 8 in. (23 cm.)
Length: 27 in. (68.8 cm.)
Conceived *circa* 1948

\$300,000-500,000



PROPERTY FROM THE COLLECTION OF ANNE AND KIRK DOUGLAS

899

ALBERTO GIACOMETTI (1901-1966)

Lampadaire modèle "figure"

bronze with reddish brown patina
Height: 61½ in. (155.3 cm.)
Designed by Alberto Giacometti for Jean-Michel Frank *circa* 1933-1934; this bronze version cast by Diego Giacometti at a later date

\$150,000-250,000



900

ALBERTO GIACOMETTI (1901-1966)

Lampadaire modèle "figure"

bronze with brown and gold patina
Height: 61½ in. (155.2 cm.)
Designed by Alberto Giacometti for Jean-Michel Frank *circa* 1933-1934; this bronze version cast by Diego Giacometti at a later date

\$150,000-250,000

901

GEORGES BRAQUE (1882-1963)

Le char (Conductrice III)

signed 'G Braque' (lower right)
oil and charcoal on canvas
10¾ x 16¼ in. (27 x 41 cm.)
Painted in 1934

\$50,000-70,000



PROPERTY FROM THE FOUNDATION MIREILLE AND JAMES LÉVY

902

HENRY MOORE (1898-1986)

Maquette for Seated Figure Against Curved Wall

bronze with brown patina
Height: 6½ in. (16.5 cm.)
Length: 10¾ in. (27 cm.)
Conceived in 1955; this bronze version cast in 1956-1957

\$60,000-80,000



PROPERTY FROM THE FOUNDATION MIREILLE AND JAMES LÉVY

903

HENRY MOORE (1898-1986)

Armless Seated Figure Against Round Wall

bronze with brown patina
Height: 10¼ in. (26 cm.)
Conceived in 1957

\$30,000-50,000





PROPERTY FROM THE FOUNDATION MIREILLE AND JAMES LÉVY
904

HENRY MOORE (1898-1986)

Seated Woman in Chair

signed and numbered 'Moore 4/6' (on the left side of the chair);
signed and numbered again 'Moore 4/6' (on the back of the base)
bronze with brown patina
Height: 10¼ in. (26 cm.)
Conceived in 1956; this bronze version cast in 1964

\$100,000-150,000

PROPERTY FROM A PRIVATE COLLECTION

907

AFTER A DESIGN BY

JEAN (HANS) ARP (1886-1966)

Nadir

with Tabard Frères & Soeurs Aubusson mark (in the weave;
lower right)
hand-woven wool tapestry
68¼ x 59½ in. (173.4 x 150.2 cm.)
Conceived in 1960 and hand-woven at a later date

\$5,000-7,000



PROPERTY FROM A FAMILY FOUNDATION

905

HENRY MOORE (1898-1986)

Relief: Seated Mother and Child

signed and numbered 'Moore 7/9' (on the left edge)
bronze relief with green and brown patina
11½ x 9¾ in. (31.9 x 24.7 cm.)
Conceived in 1977

\$12,000-18,000

PROPERTY FROM THE FOUNDATION MIREILLE AND JAMES LÉVY

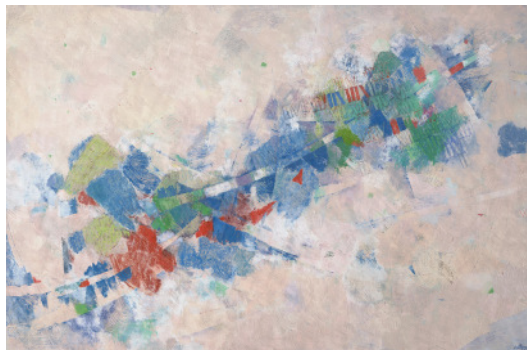
908

JEAN (HANS) ARP (1895-1965)

Gueule de fleur

white marble
Height: 20 in. (50.8 cm.)
Executed in 1960; unique

\$200,000-300,000



PROPERTY FROM A PRIVATE COLLECTION

906

MORDECAI ARDON (1896-1992)

The Ship of Hours

signed 'Ardon.' (lower right); signed again and titled 'Ardon
"THE SHIP OF HOURS"' (on reverse); titled again "'THE SHIP
OF HOURS"' (on the stretcher)
oil on canvas
51 x 76¾ in. (129.5 x 195.4 cm.)
Painted in 1968

\$250,000-350,000

909

VICTOR BRAUNER (1903-1966)

Arbre de la volupté

signed and dated 'VICTOR BRAUNER 1961-' (lower right);
titled 'ARBRE DE LA VOLUPTÉ' (on the reverse)
oil on canvas
39½ x 32 in. (100.4 x 81.3 cm.)
Painted in 1961

\$180,000-250,000





910

WIFREDO LAM (1902-1982)

La réunion III

signed 'Wifredo Lam' (lower right)
oil on canvas
41½ x 51¼ in. (105.4 x 130.2 cm.)
Painted in 1964

\$700,000-900,000

PROPERTY FROM A PRIVATE COLLECTION

913

JEAN COCTEAU (1889-1963)

Les trois yeux

signed 'Jean Cocteau' (lower center); marked and numbered
'Edition originale de Jean Cocteau Atelier Madeline-Jolly 12/50'
(on the underside)
terracotta plate with colored engobe, pastel and glaze
Diameter: 15¼ in. (38.7 cm.)
Conceived circa 1958 and executed in a numbered edition of 50

\$4,000-6,000



PROPERTY FROM A PRIVATE CHICAGO COLLECTION

911

LEONOR FINI (1908-1996)

L'inutile liberté

signed 'Leonor Fini' (lower right)
oil on canvas
23½ x 47½ in. (59.7 x 119.7 cm.)
Painted in 1985

\$100,000-150,000

914

LÉOPOLD SURVAGE (1879-1968)

Mélancolie

signed and dated 'Survage. 6.8.36.' (lower right)
oil on canvas
24½ x 19½ in. (61 x 49.8 cm.)
Painted on 6 August 1936

\$50,000-70,000



912

SALVADOR DALÍ (1904-1989)

L'oeil fleuri, décor pour le ballet "Tristan fou"

oil and tempera on joined canvas
54½ x 62¾ in. (138.4 x 158.5 cm.)
Painted in 1944

\$120,000-180,000

915

VICTOR BRAUNER (1903-1966)

Génération

signed with initials and dated 'V.B.VII.1956,' (lower right);
titled 'GENERATION' (on the stretcher)
oil on canvas
28¾ x 23½ in. (73 x 59.6 cm.)
Painted in July 1956

\$50,000-70,000





PROPERTY FROM A DISTINGUISHED COLLECTION

916

OSCAR DOMÍNGUEZ (1906-1958)

Taureau

signed and dated 'Dominguez 1951' (lower right)

oil on canvas

28¾ x 19¾ in. (73 x 50 cm.)

Painted in 1951

\$50,000-70,000



917

JOAN MIRÓ (1893-1983)

Femme

signed 'Miró' (on the back); numbered and stamped with foundry mark

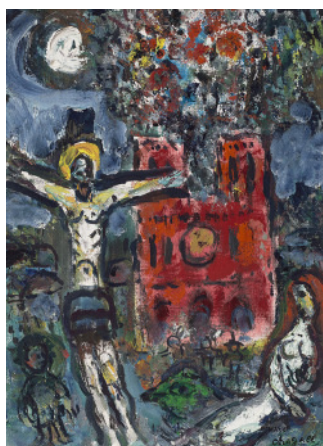
'2/4 CLEMENTI CIRE PERDUE' (on the side)

bronze with green and brown patina

Height: 32 in. (81.3 cm.)

Conceived in 1969

\$150,000-200,000



PROPERTY FROM A PRIVATE ATLANTA COLLECTION

918

MARC CHAGALL (1887-1985)

Esquisse pour tableau "L'arbre de Jessé"

stamped with signature 'Marc Chagall' (lower right);

signed 'Chagall' (on the reverse)

oil on canvas

13 x 9½ in. (33 x 24.1 cm.)

Painted in 1960

\$250,000-350,000

919

AUGUSTE HERBIN (1882-1960)

Christ

signed and dated 'Herbin 1944' (lower right) and titled "'Christ'"

(lower left)

oil on burlap

76¾ x 51½ in. (195 x 129.9 cm.)

Painted in 1944

\$100,000-150,000



PROPERTY FROM THE COLLECTION OF ALMA AND ALFRED HITCHCOCK

920

GEORGES ROUAULT (1871-1958)

La Sainte Face, dit aussi "Le Saint Suaire"

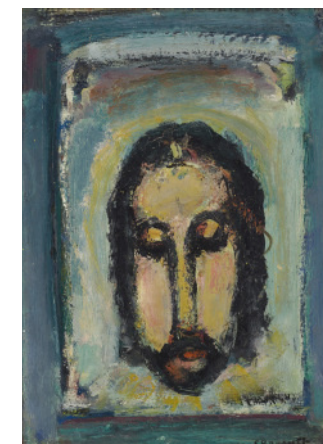
signed 'G Rouault' (lower right)

oil on canvas

14¾ x 10¾ in. (37 x 27.2 cm.)

Painted in 1937

\$20,000-30,000



921

LÉONARD TSUGUHARU FOUJITA (1886-1968)

Les Bohémiens

signed 'T. Foujita' and signed again 'Tsuguharu' in Japanese

(lower left); inscribed 'Paysage à Collioure (Pyrenées Orientale)'

(on the stretcher)

oil on canvas

10¾ x 13¾ in. (27.3 x 35.1 cm.)

Painted in 1919

\$25,000-35,000





922

MAURICE UTRILLO (1883-1955)

Vase de fleurs

signed 'Maurice, Utrillo, V.' (lower right)
oil on canvas
36¼ x 29 in. (92.3 x 73.5 cm.)
Painted circa 1932

\$40,000-60,000

925

ANDRÉ BRASILIER (B. 1929)

Cavaliers bleus sur la plage

signed 'André Brasilier.' (center right)
oil on canvas
15 x 21½ in. (38.2 x 55 cm.)
Painted in 1982

\$25,000-35,000



923

RAOUL DUFY (1877-1953)

La Place d'Hyères, L'Obélisque et le kiosque à musique

stamped with signature 'Raoul Dufy' (lower left)
oil on canvas
8¾ x 13 in. (22.2 x 33.2 cm.)
Painted in 1927

\$50,000-70,000

926

RAOUL DUFY (1877-1953)

La Baie de Sainte-Adresse

stamped with signature 'Raoul Dufy' (lower center)
oil on canvas
9½ x 13¾ in. (24.3 x 35.2 cm.)

\$40,000-60,000



PROPERTY FROM A PRIVATE ATLANTA COLLECTION

924

MARC CHAGALL (1887-1985)

Couple dans le profil d'âne

stamped with signature 'Marc Chagall' (lower right)
oil and tempera on masonite
14¾ x 13 in. (37.5 x 33 cm.)
Painted circa 1980

\$250,000-350,000

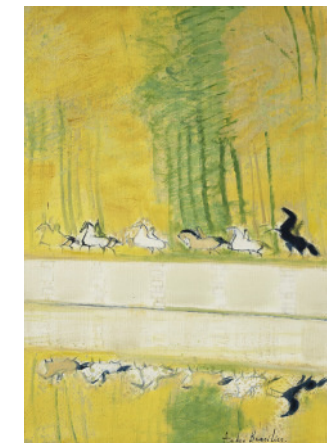
927

ANDRÉ BRASILIER (B. 1929)

Cavalcade au bord du Cher

signed 'André Brasilier.' (lower right); titled and signed again with initials 'Cavalcade au bord du Cher A.B.' (on the reverse)
oil on canvas
21¾ x 15 in. (55.3 x 38.1 cm.)
Painted in 1982

\$20,000-30,000





PROPERTY FROM A PRIVATE ASIAN COLLECTION

928

RAOUL DUFY (1877-1953)

La Statue

stamped with signature 'Raoul Dufy' (on the reverse)
oil on panel
6½ x 14¼ in. (16.8 x 35.9 cm.)
Painted circa 1942

\$18,000-25,000



929

ANDRÉ DERRAIN (1880-1954)

Portrait

signed 'a derain' (lower right)
oil on canvas
18¼ x 14¼ in. (46.4 x 36.3 cm.)
Painted circa 1927-1928

\$12,000-18,000

930

BERNARD BUFFET (1928-1999)

La mer I

signed and dated 'Bernard Buffet 66' (upper right)
oil on canvas
25½ x 39¾ in. (64.8 x 100 cm.)
Painted in 1966

\$20,000-30,000



A SOPHISTICATED ELEGANCE: PROPERTY FROM
THE ELLA B. SCHAAP ESTATE

931

JACQUES LIPCHITZ (1891-1973)

Carnival

signed and marked with artist's thumbprint 'JLipchitz'
(on the top of the base); stamped with foundry mark
'MODERN ART. FDRY. N.Y. N.Y.' (on the left side of the base)
bronze with dark brown patina
Height: 17¾ in. (45.1 cm.)
Conceived and cast in 1958; unique

\$20,000-30,000





The SurRealist World

of Rosalind Gersten Jacobs
& Melvin Jacobs

AUCTION

Saturday 14 May
At 9.30 am (Lots 601 - 677)

20 Rockefeller Plaza
New York, NY 10020

HEAD OF SALE

Allegra Bettini
abetтини@christies.com
+1 212 636 2466

SALE COORDINATOR

Alexa Macphee
amacphee@christies.com
+1 212 636 2237

VIEWING

Saturday 30 April - Saturday 14 May
Monday - Saturday 10.00 - 5.00 pm
Sunday 1 May 1.00 pm - 5.00 pm
Sunday 8 May 10.00 am - 5.00 pm

AUCTIONEER

Adrien Meyer (#1365994)

AUCTION LICENSE

Christie's (#1213717)

AUCTION CODE AND NUMBER

To place bids please contact the Bid department +1 212 636 2437
Please note this sale should be referred to as **VIOLIN-21472**

ABSENTEE AND TELEPHONE BIDS

Tel: +1 212 636 2437

BIDDING ON BEHALF OF THE SELLER

The auctioneer may, at his or her sole option, bid on behalf of the seller up to but not including the amount of the reserve either by making consecutive bids or by making bids in response to other bidders. The auctioneer will not identify these as bids made on behalf of the seller and will not make any such bids at or above the reserve.



Scan to view full auction online

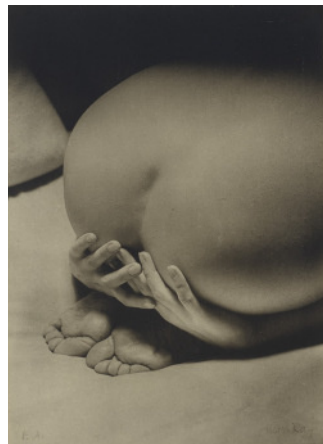
CHRISTIE'S



601
MAN RAY (1890-1976)
Le fer rouge

signed, dated, titled and numbered 'MAN RAY FER ROUGE 1966 3/10' (on the handle)
painted flat-iron
6 5/8 x 3 3/8 x 3 1/2 in. (16.2 x 9.2 x 8.9 cm.)
Conceived in 1966

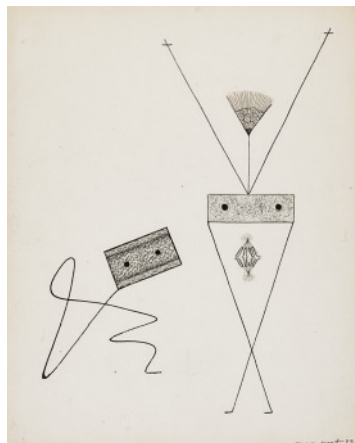
\$25,000-35,000



602
MAN RAY (1890-1976)
La Prière, 1930

signed in pencil 'Man Ray' (lower right) and numbered in pencil 'EA' (lower left)
gelatin silver print on linen, printed late 1960s
image/stretched linen: 13 x 9 1/4 x 1 1/2 in. (33 x 23.4 x 1.3 cm.)
This work is an artist's proof aside from an edition of seven

\$80,000-120,000



603
MAX ERNST (1891-1976)
Illustrationsvorlage zu 'Partition', S.77

signed and dated 'max ernst 49' (lower right)
pen and India ink and paper collage on paper
10 3/4 x 8 3/8 in. (27 x 21.8 cm.)
Executed in 1949

\$10,000-15,000

604
RICHARD HUMPHRY (B. 1942)
The Cause of Thunder

signed 'Richard Humphry' (lower center)
oil on Masonite
17 7/8 x 19 in. (45.4 x 48.2 cm.)
Painted in 1965

\$1,000-1,500



605
JEAN (HANS) ARP (1886-1966)
Découpage No. 8 dite "Ecriture"

signed with monogram and numbered '8' (on the reverse)
brass with black patina
12 x 8 3/8 in. (30.5 x 21.3 cm.)
Conceived in 1957

\$12,000-18,000



606
MAN RAY (1890-1976)
Demain, 1932

signed and dated in pencil 'Man Ray 1932' (lower right on the mount)
gelatin silver print, mounted on card, printed 1950s
image/sheet: 6 1/8 x 3 1/4 in. (15.4 x 8.2 cm.)
mount: 12 1/4 x 9 in. (31.1 x 22.8 cm.)

\$30,000-50,000





607
DOROTHEA TANNING (1910-2012)

Le mal oublié

signed and dated 'Tanning 55' (lower right)
oil on canvas
51½ x 63¾ in. (129.8 x 162 cm.)
Painted in Huismes in 1955

\$300,000-500,000

610
**MAN RAY (1890-1976) AND
WILLIAM NELSON COPLEY (1919-1996)**

Indestructible Object (Think)

signed and dated 'Man Ray 1966' (on the paper element);
signed 'CPLY' (on the canvas element)
pen and black ink on paper by Man Ray and oil on canvas by
William Copley affixed with a paperclip to vintage metronome
8¾ x 4¾ x 4¾ in (22.2 x 11 x 11 cm.)
Executed in New York in 1966 at a dinner party in the Jacobs home

\$100,000-150,000



608
YVES TANGUY (1900-1955)

Sans titre

signed and dated 'YVES TANGUY 40' (lower right)
watercolor, gouache and pen and black ink on paper
8 x 5¾ in. (20.3 x 14.5 cm.)
Executed in 1940

\$120,000-180,000

611
WILLIAM NELSON COPLEY (1919-1996)

Capella Sextina

signed and dated 'CPLY 61' (lower left)
oil on canvas
64 x 51 in. (162.6 x 130 cm.)
Painted in January 1961

\$150,000-200,000



609
RENÉ MAGRITTE (1898-1967)

La chambre d'écoute

signed 'Magritte' (lower left)
pen and India ink and inkwash on paper
7 x 9¾ in. (17.6 x 23.8 cm.)

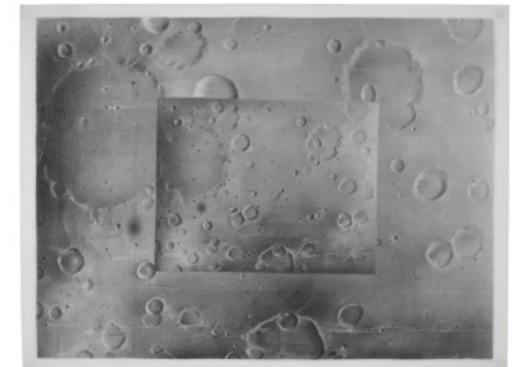
\$350,000-550,000

612
VIJA CELMINS (B. 1938)

Untitled (Mars)

signed and dated 'V. Celmins 1969' (on the reverse)
graphite on acrylic ground on paper
14 x 18½ in. (35.6 x 47 cm.)
Drawn in 1969

\$1,800,000-2,500,000





613
MARCEL DUCHAMP (1887-1968)
Feuille de vigne femelle

signed and inscribed 'exemplaire RozMel et toujours affectueusement Marcel N.Y. 1959' (on the underside); marked 'Feuille de vigne femelle 1950 2/10' (on the back)
 painted plaster
 3½ x 5¾ x 4¼ in. (8.9 x 13.6 x 12 cm.)
 Conceived in 1950; this plaster version cast from the galvanized plaster original and painted by Man Ray in 1951
 \$500,000-800,000

616
MAN RAY (1890-1976)
Portrait of Rosalind Gersten Jacobs, 1957

signed and dated 'MAN RAY PARIS 57' (lower right of the frame)
 color transparency
 overall framed: 4¼ x 3 in. (10.7 x 7.6 cm.)
 \$2,000-3,000



614
MAN RAY (1890-1976)
Songe de la clef

signed and dated 'Man Ray 1942' (lower right) and titled 'Songe de la Clef' (upper left); signed, dated and titled again and inscribed 'Man Ray 1942 "La songe de la clef" (center of painting 40 x 80 inches) (without key)' (on the stretcher)
 oil on canvas
 9½ x 18¼ in. (23.2 x 46.3 cm.)
 Painted in Los Angeles in 1942
 \$400,000-600,000

617
MAN RAY (1890-1976)
Smoking Device

signed, numbered and titled "SMOKING DEVICE No 3-00 MAN RAY" (on the underside)
 wood test tube rack, plastic tubing and marbles assemblage
 8¾ x 3 x 8¾ in. (22.2 x 7.6 x 22.2 cm.)
 Executed circa 1961
 \$20,000-30,000



615
MAN RAY (1890-1976)
Le Violon d'Ingres, 1924

signed and dated in ink 'Man Ray 1924' (lower right); stamped in red ink 'ORIGINAL' (on the reverse of the flush mount)
 unique gelatin silver print, flush-mounted on board
 image/sheet/flush mount: 19 x 14¾ in. (48.5 x 37.5 cm.)
 \$5,000,000-7,000,000

618
MAN RAY (1890-1976)
Rayograph, 1928

signed and dated in pencil 'Man Ray 28' (lower right); stamped photographer's credit 'MAN RAY, PARIS, V 8 RUE DU VAL-DE-GRACE TELEPH, DANTON 92-95', annotated 'Original Rayograph 1 print' and variously otherwise annotated in pencil (on the reverse)
 unique gelatin silver print
 image/sheet: 11 x 8¾ in. (28 x 22.5 cm.)
 \$100,000-150,000





619
MAN RAY (1890-1976)
Rayograph, 1923

signed and dated in pencil 'Man Ray 23' (lower right); stamped in black ink 'ORIGINAL' and photographer's credit in red ink 'MAN RAY 31bis, RUE CAMPAGNE PREMIÈRE PARIS XIVe' and variously annotated in pencil (on the reverse)
 unique gelatin silver print
 image/sheet: 11¼ x 9¾ in. (30 x 24 cm.)

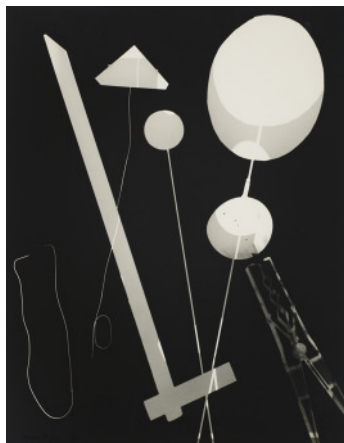
\$200,000-300,000



620
MAN RAY (1890-1976)
Rayograph, 1920s

signed in pencil 'Man Ray' (lower right); stamped in red ink 'ORIGINAL', photographer's credit 'MAN RAY 31bis, RUE CAMPAGNE PREMIÈRE PARIS XIVe' and annotated in pencil 'Original Rayograph 1 print' and variously otherwise annotated in pencil (on the reverse)
 unique gelatin silver print
 image/sheet: 9¼ x 6½ in. (23.5 x 16.7 cm.)

\$200,000-300,000



621
MAN RAY (1890-1976)
Rayograph, 1945

signed and dated in black ink 'Man Ray 45' (lower left); stamped twice in black ink 'ORIGINAL' and inscribed in ink 'Je certifié que Rayograph est bien un original fait sans négatif Man Ray' and variously annotated in pencil (on the reverse)
 unique gelatin silver print
 image/sheet: 13¼ x 10¾ in. (35 x 27.3 cm.)

\$60,000-80,000

622
BERENICE ABBOTT (1898-1991)

El: Second and Third Avenue Lines Bowery and Division Street, Manhattan, 1936

signed in pencil 'Berenice Abbott' (lower right on the mount); stamped photographer's Abbott, Maine credit (on the reverse of the mount)
 gelatin silver print, printed later
 image/sheet: 9½ x 7½ in. (24.2 x 19 cm.)
 mount: 15¼ x 14 in. (38.8 x 35.5 cm.)

\$4,000-6,000



623
SALVADOR DALÍ (1904-1989)

Illustration pour l'article de Salvador Dalí "The American City Night-and-Day by Dalí"

signed and dated 'Salvador Dalí 1935' (lower center)
 black Conté crayon and pencil on card
 11¾ x 17¾ in. (30 x 44 cm.)
 Drawn in 1935

\$100,000-150,000



624
CHRISTO (1935-2020) AND JEANNE-CLAUDE (1935-2009)

Wrapped Walkways, Project for Jacob L. Loose Park, Kansas City, Missouri

signed, titled and dated 'Christo 1978 WRAPPED WALKWAYS (PROJECT FOR JACOB L. LOOSE PARK, KANSAS CITY, MISSOURI)' (on the upper edge of the left panel)
 graphite, charcoal, pastel, photograph, staples, map and fabric collage on board, mounted to panel, in Plexiglas box, in two parts
 each: 28½ x 22¼ in. (72.4 x 56.5 cm.)
 overall: 28½ x 44 in. (71.1 x 111.8 cm.)
 Executed in 1978

\$70,000-100,000



(2)



625

JAMES CASEBERE (B. 1953)

Pink Hallway #2

signed 'J Casebere' (on a paper label affixed to the reverse)
Cibachrome print face-mounted to Plexiglas, flush-mounted to aluminum
60 x 48 in. (152.4 x 121.9 cm.)
Executed in 2000; this work is an artist's proof number one of two aside from an edition of five

\$8,000-12,000

628

RENÉ MAGRITTE (1898-1967)

L'autre son de cloche

signed 'Magritte' (lower right); titled and dated
"L'AUTRE SON DE CLOCHE" 1951' (on the reverse)
oil on canvas
14 x 18¼ in. (35.6 x 46.3 cm.)
Painted in 1951

\$4,000,000-7,000,000



626

GILBERT & GEORGE (B. 1942 & B. 1943)

View

signed, dated and titled 'View Gilbert & George 1983' (lower right)
hand-dyed gelatin silver prints in artist's frames, in twenty-four parts
each: 23¾ x 19¾ in. (60.3 x 50.2 cm.)
overall: 95¼ x 119¼ in. (242 x 303 cm.)
Executed in 1983

\$120,000-180,000

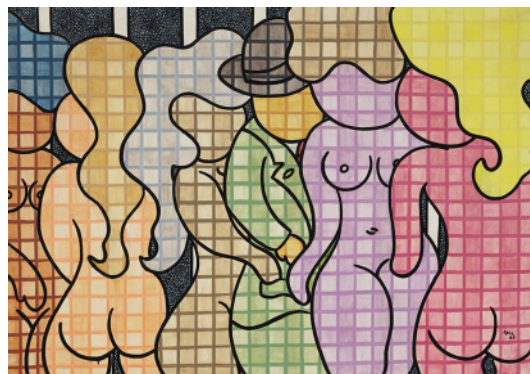
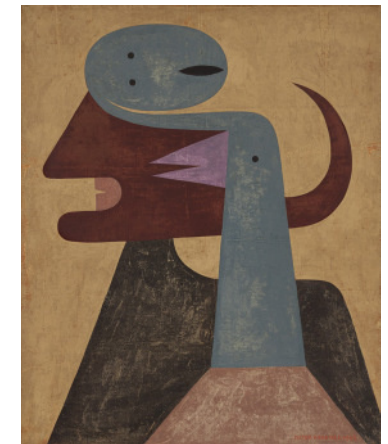
629

VICTOR BRAUNER (1903-1966)

La lumière noire

signed and dated 'VICTOR BRAUNER 1964.' (lower right);
titled 'LA LUMIÈRE NOIRE' (on the reverse)
oil on canvas
28¾ x 23¾ in. (73 x 60 cm.)
Painted in 1964

\$100,000-150,000



627

WILLIAM NELSON COPLEY (1919-1996)

Gingham Girls

signed and dated 'CPLY 65' (lower right)
oil on canvas
44¾ x 63¾ in. (113.7 x 162 cm.)
Painted in 1965

\$120,000-180,000

630

CLAUDE LALANNE (1925-2019)

Collier 'Mimosa'

signed and numbered 'C. Lalanne Artcurial 119/250' (near the clasp)
gilt bronze necklace
overall: 7¼ x 5½ in. (18.4 x 14 cm.)
diameter: 4¾ in. (12.4 cm.)
Executed in 1989

\$10,000-15,000





631

MAN RAY (1890-1976)

Pendantif-Pendant

signed, dated and numbered 'MAN RAY 9/12 73' (on the left earring); inscribed with the maker's mark 'GEM' (on the back of the left earring); stamped with initials and numbered 'MR8' (on the back of the right earring)
gold earrings
height: 3½ in. (8.9 cm.)
Executed in 1973

(2)

\$20,000-30,000



632

MAN RAY (1890-1976)

La Jolie

signed and numbered 'Man Ray 7/12' (on the pendant); stamped with the goldsmith's mark and inscribed 'KT 24 GEM 14 KT' (on the clasp)
gold and lapis lazuli necklace
pendant: 4¾ x 4¼ in. (12 x 11.5 cm.)
necklace diameter: 7¾ in. (12.5 cm.)
Conceived in 1961 and executed in 1971 in an edition of twelve by GEM Montebello with the original case

\$25,000-35,000



633

MAN RAY (1890-1976)

The Oculist

signed, numbered, titled and dated 'Man Ray 2/12 The Oculist 1944-1971' (on the top of the rim); stamped with the maker's mark and inscribed 'GEM KT 18' (on the reverse)
gold and malachite brooch
length: 4¼ in. (11 cm.)
Conceived in 1944 and executed in 1971 in a numbered edition of twelve plus one artist's proof by GEM Montebello with the original case

\$15,000-20,000



634

NOMA COPLEY (1916-2006)

Necktie

silver necklace with adjustable neck ring
overall: 17 x 4 in. (43.2 x 10.2 cm.)
Executed circa 1969

\$6,000-8,000



(2)

635

NOMA COPLEY (1916-2006)

Shirt Sleeve Cuffs

signed 'Noma' (on the interior of each)
silver bracelets
each: 1¾ x 2½ x 1¾ in. (4.4 x 6.3 x 4.4 cm.)
Executed circa 1975

\$2,000-3,000



636

NOMA COPLEY (1916-2006)

Gold Button Cuff

signed and inscribed 'Noma 18K' (on the interior)
gold bracelet
1½ x 2¼ x 2 in. (3.8 x 5.7 x 5 cm.)
Executed circa 1974

\$2,000-3,000



637
NOMA COPLEY (1916-2006)
Gold Button Ring with Four Round Emeralds
 signed, inscribed and numbered 'Noma 18k 3/6' (on the interior)
 gold ring with four emeralds
 7/8 x 7/8 x 3/4 in. (2.2 x 2.2 x .75 cm.)
 Executed circa 1980
 \$1,200-1,800



638
MAX ERNST (1891-1976)
Tête Modern Art (P.H. 1773)
 stamped with the artist's signature, the François and Pierre Hugo
 reference number and numbered 'max ernst 4/8 1631 1773' and
 stamped with the goldsmith's mark and the French assay mark
 (on the reverse)
 gold pendant with the original wooden case
 height: 2 1/2 in. (6.4 cm.)
 Executed in February 1974 in a numbered edition of eight plus
 two *exemplaires d'artiste* and two *exemplaires d'auteur*
 \$10,000-20,000



639
AFTER PABLO PICASSO (1881-1973)
Petit barbu (P.H. 1767)
 stamped with signature, François and Pierre Hugo reference number
 and numbered 'Picasso 1715 1767 17/20' and stamped with the
 goldsmith's mark and the French assay mark (on the reverse)
 gold medallion with the original wooden case
 diameter: 3 1/8 in. (8 cm.)
 Executed in November 1974 in a numbered edition of 20 plus two
exemplaires d'artiste and two *exemplaires d'auteur*
 \$12,000-18,000

640
RENÉ MAGRITTE (1898-1967)
Eloge de la dialectique
 signed 'Magritte' (lower left); titled and dated
 "'L'Eloge de la Dialectique" 1948' (on the reverse)
 gouache on paper
 14 x 17 7/8 in. (35.6 x 44.5 cm.)
 Painted in 1948
 \$2,500,000-4,500,000



641
MAN RAY (1890-1976)
Rayograph, 1926
 signed and dated in pencil 'Man Ray - 26' (upper right); stamped in red
 ink 'ORIGINAL' and variously annotated in pencil (on the reverse)
 unique gelatin silver print
 image/sheet: 11 1/8 x 9 3/8 in. (29.5 x 23.8 cm.)
 \$150,000-250,000



642
LEE MILLER (1907-1977)
Charlie Chaplin with Chandelier, Paris, France, 1931
 signed, numbered and inscribed in pencil 'Lee Miller 15 Chaplain [sic]'
 and with the Julien Levy Gallery stamp (on the reverse)
 gelatin silver print
 image/sheet: 7 x 9 in. (17.8 x 22.8 cm.)
 \$10,000-15,000





643
ARMAN (1928-2005)
Lustre

light bulbs and copper wire
overall: 30 x 16½ x 16½ in. (76.2 x 41.9 x 41.9 cm.)
Executed in 1965
\$15,000-20,000



644
RENÉ MAGRITTE (1898-1967)
Le coeur du monde

signed 'Magritte' (upper left); titled 'Le Coeur du Monde'
(on card affixed to the reverse of the frame)
gouache on card
7¼ x 5¾ in. (18.2 x 13.4 cm.)
Painted circa 1955
\$300,000-500,000



645
ALFRED EISENSTAEDT (1898-1995)
*René Breguet Serves Cocktails at the Grand Hotel
Ice Rink, St. Moritz, 1932*

signed and numbered in ink 'Eisenstaedt 8/50' (lower right; margin);
titled and dated in pencil in Time Inc. stamp and stamped with
photographer's copyright credit (on the reverse)
gelatin silver print, printed 1979
image: 12½ x 9½ in. (31.8 x 24.1 cm.)
sheet: 14 x 11 in. (35.5 x 28 cm.)
This work is number eight from an edition of fifty
\$4,000-6,000



646
MAN RAY (1890-1976)
Rayograph, 1926

signed and dated in pencil 'Man Ray 1926' (lower left);
stamped in red ink 'ORIGINAL' and variously annotated in pencil
(on the reverse of the flush mount)
unique gelatin silver print, flush-mounted on board
image/sheet/flush mount: 11½ x 9¼ in. (29.5 x 23.5 cm.)
\$100,000-150,000



647
MAN RAY (1890-1976)
Rayograph, 1957

signed and dated in white pencil 'Man Ray 1957'
(lower right on the mount)
unique gelatin silver print, mounted on black paper
image/sheet: 9¾ x 7 in. (23.8 x 17.8 cm.)
mount: 12¾ x 10 in. (32.4 x 25.4 cm.)
\$30,000-50,000



648
MAN RAY (1890-1976)
Ostrich Egg, 1944

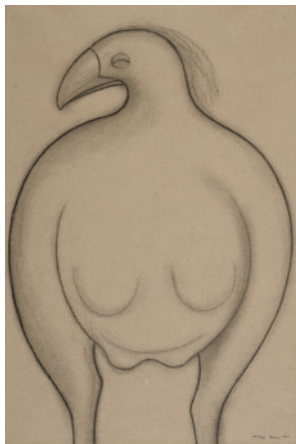
signed and dated in black ink 'Man Ray 1944' (lower right)
gelatin silver print
image/sheet: 10 x 8 in. (25.4 x 20.3 cm.)
\$30,000-50,000



649
WILLIAM NELSON COPLEY (1919-1996)
American Girdle

signed and dated 'CPLY 65' (lower right)
oil and fabric girdle on canvas
32 x 26 in. (81.5 x 66 in.)
Executed in 1965

\$60,000-80,000



650
MAX ERNST (1891-1976)
Ohne Titel

signed 'max ernst' (lower right)
pencil on paper
17½ x 11¼ in. (44.8 x 29.2 cm.)
Drawn in 1942

\$40,000-60,000



651
AGUSTÍN CÁRDENAS (1927-2001)
Bouba

signed with initials and inscribed 'C.A. E/A' (near the base)
bronze with dark brown patina
12 x 10 x 4¼ in. (30.5 x 25.4 x 10.8 cm.)
Executed in 1974-1975

\$20,000-25,000

652
GEORGE RICKEY (1907-2002)
Delta Theme with Two Lines

signed, numbered and dated 'Rickey 6/8 1979' (on the base)
stainless steel
25 x 19¼ x 3 in. (63.5 x 50.2 x 7.6 cm.)
Executed in 1976-1979

\$18,000-25,000



653
BERND (1931-2007) & HILLA (1934-2015) BECHER
Cement Plant

signed and titled 'CEMENT PLANT NEUMARKT, BAVARIA B. & H. BECHER' (on the reverse of each)
three gelatin silver prints
each: 16 x 12 in. (40.6 x 30.5 cm.)
Executed circa 1988

\$30,000-50,000



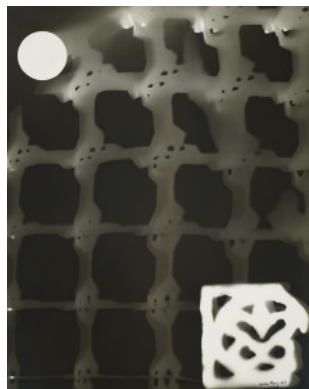
(3)

654
RENÉ MAGRITTE (1898-1967)
La fidélité des images #2: La mort des fantômes, 1928

signed by Georgette Magritte and numbered in pencil 'II 11/100' (in the margin); credited, titled and dated on gallery label (on the reverse of the frame)
gelatin silver print, printed 1976
image: 4½ x 3 in. (11.4 x 7.6 cm.)
sheet: 9½ x 7 in. (24.5 x 17.8 cm.)
This work is one from a portfolio of sixteen photographs titled *La fidélité des images* published by Lebeer Hossmann, Brussels, 1976, number eleven from an edition of 100

\$3,000-5,000





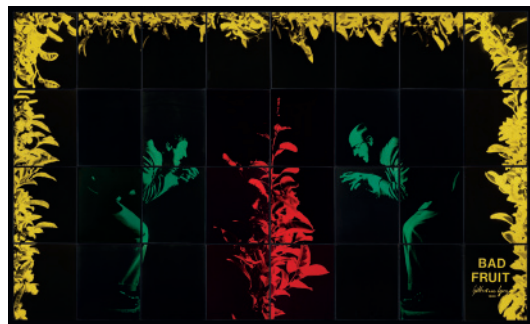
655

MAN RAY (1890-1976)

Rayograph, 1943

signed and dated in ink 'Man Ray - 43' (lower right); stamped in black ink 'ORIGINAL', inscribed in ink 'Je certifié que Rayograph est bien un original fait sans négatif Man Ray' and with Museum of Modern Art exhibition label for *Diogenes with a Camera II* [1952-1953] accompanied by Philip Granville lender label (on the reverse)
unique gelatin silver print
image/sheet: 13¼ x 10¼ in. (35 x 27.3 cm.)

\$80,000-120,000



656

GILBERT & GEORGE (B. 1943 & B. 1942)

Bad Fruit

signed, dated and titled 'BAD FRUIT Gilbert AND George 1980' (lower right)
hand-painted gelatin silver prints in artist's frames, in thirty-two parts
each: 23¼ x 19¼ in. (60.3 x 50.2 cm.)
overall: 95¼ x 159 in. (242 x 404 cm.)
Executed in 1980

\$150,000-200,000

657

MAN RAY (1890-1976)

Blue Bread

signed, dedicated, inscribed and dated 'for Roz and for Mel Blue bread is the favorite food of Blue Beard I ate all of it - thanks Man Ray Oct 13-65' (on the inside of the lid)
black felt-tip pen on painted papier mache box
4½ x 18¾ x 5½ in. (10.4 x 46.6 x 14.3 cm.)
Executed in New York on 13 October 1965 at a dinner party in the Jacobs home

\$10,000-15,000



658

RENÉ MAGRITTE (1898-1967)

La fidélité des images #12: Dieu, Le huitième jour, 1937

signed by Georgette Magritte and numbered in pencil 'XII 11/100' (in the margin); credited, titled and dated on gallery label (on the reverse of the mat)
gelatin silver print, printed 1976
image: 3¾ x 2¾ in. (9.9 x 7 cm.)
sheet: 9½ x 7 in. (24.5 x 17.8 cm.)
This work is one from a portfolio of sixteen photographs titled *La fidélité des images* published by Lebeer Hossmann, Brussels, 1976, number eleven from an edition of 100

\$3,000-5,000



659

RENÉ MAGRITTE (1898-1967)

Le modèle rouge

signed 'Magritte' (upper left); signed again, dated and titled 'Magritte 1948 "Le modèle rouge"' (on the reverse)
pencil on paper
12¾ x 9¼ in. (32.4 x 23.7 cm.)
Drawn in 1948

\$700,000-1,000,000



660

SALVADOR DALÍ (1904-1989)

Echecs (Hommage à Marcel Duchamp)

signed 'Dalí' (on the underside of each piece); numbered and marked '13/225 JM' (on the underside of each king)
polished and brown patinated bronze chess pieces
height varies from 3¾ in. (8.5 cm.) to 1½ in. (3.8 cm.)
Conceived in 1966-1970

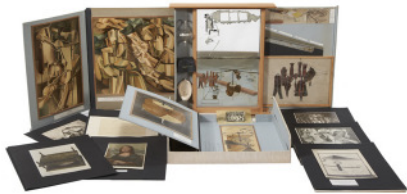
\$20,000-30,000



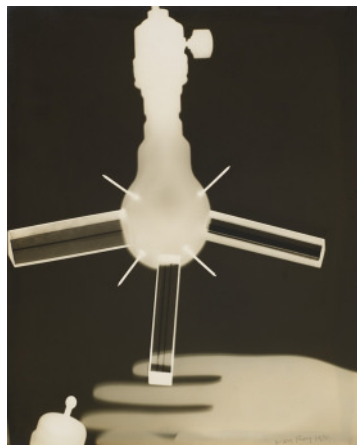
(32)



661
MAN RAY (1890-1976)
Chess set
 signed, dated and stamped with initial 'MAN RAY 1947 R' (on the top of the gold king); stamped with initial again 'R' (on the top of the red king) anodized aluminum chess pieces
 height varies from 1 $\frac{7}{8}$ in. (4.7 cm.) to 1 $\frac{1}{4}$ in. (3.2 cm.)
 Conceived in wood in 1920; this version executed in 1947 (32)
 \$10,000-15,000



662
MARCEL DUCHAMP (1887-1968)
De ou par Marcel Duchamp ou Rose Sélavy (La Boîte), Series C
 signed, inscribed and dated 'Roz Mel grande amitié devrait être en un mot et affectueusement à tous deux Marcel 1959' (in ink on the interior of the case)
 the complete set of 68 miniature replicas and reproductions of works by the artist, mounted on and contained in the original cardboard, paper, wood and cloth-covered box
 overall: 15 $\frac{3}{4}$ x 14 $\frac{3}{4}$ x 3 $\frac{1}{2}$ in. (400 x 375 x 90 mm.)
 Conceived in 1935-1941; this example is from the edition of 30 assembled in 1958 by Iliazd (Iliia Zdanovitch)
 \$120,000-180,000



663
MAN RAY (1890-1976)
Rayograph, 1930
 signed and dated in pencil 'Man Ray 1930' (lower right); stamped in black ink 'ORIGINAL' and photographer's credit in black ink 'MAN RAY 31bis, RUE CAMPAGNE PREMIÈRE PARIS - 14e' and variously annotated in pencil (on the reverse of the flush mount)
 unique gelatin silver print, flush-mounted on card
 image/sheet/flush mount: 11 $\frac{1}{2}$ x 9 $\frac{1}{8}$ in. (29.5 x 23.5 cm.)
 \$100,000-150,000

664
LEE MILLER (1907-1977)
Self Portrait, New York, 1932
 titled and dated in pencil in Lee Miller Archives stamp (on the reverse)
 gelatin silver print, printed 1990
 image: 6 x 7 $\frac{1}{2}$ in. (15.2 x 19 cm.)
 sheet: 8 $\frac{1}{4}$ x 9 $\frac{1}{4}$ in. (21 x 23.5 cm.)
 \$4,000-6,000



665
MINA LOY (1882-1966)
Christ on a Clothesline
 painted collage and mixed media assemblage
 34 x 41 $\frac{1}{8}$ x 4 $\frac{1}{4}$ in. (86.3 x 105.7 x 10.8 cm.)
 Executed circa 1955-1959
 \$25,000-35,000



666
JOSEPH CORNELL (1903-1972)
Untitled (Blue Sand Tray)
 signed 'Joseph Cornell' (on a label affixed to the underside)
 wood box construction with blue sand, metal ring, ball bearing, glass and varnished French book pages
 8 $\frac{1}{2}$ x 14 $\frac{1}{8}$ x 1 $\frac{1}{8}$ in. (21.6 x 35.9 x 4.8 cm.)
 Executed circa 1948
 \$40,000-60,000





667

MAX ERNST (1891-1976)

Ohne Titel (This Means Happy Nights)

signed and inscribed 'this means happy nights. max.' (lower right); signed again and dated 'Max Ernst 1946' (on the reverse)
blue ink on paper
7¼ x 7½ in. (18.4 x 19 cm.)
Executed in 1946

\$10,000-15,000



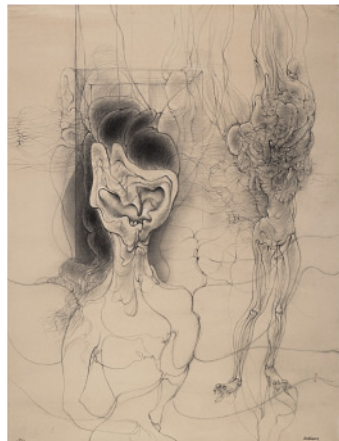
668

MAN RAY (1890-1976)

Decollage III

signed, dated, titled and inscribed "'Decollage" Man Ray-1917 Coll. Arensburg N.Y. (destroyed) (Third 1947) This for Rosalind. parmi les cadeaux que nous avons echanges. Affectueusement Man Ray Paris. April 30, 1957' (on the reverse)
collage with bobby pins, hair, thread, fabric and wax paper in the artist's painted frame
collage: 16½ x 12¼ in. (40.8 x 30.8 cm.)
frame: 21¼ x 17¼ x 1¼ in. (53.9 x 43.8 x 3.1 cm.)
Conceived in 1917 and recreated in 1947

\$200,000-300,000



669

HANS BELLMER (1902-1975)

Sans titre

signed 'Bellmer' (lower right) and dated '1960' (lower left)
charcoal and pencil with white heightening on paper
24¾ x 18¾ in. (63.2 x 48 cm.)
Drawn in 1960

\$40,000-60,000

670

EUGÈNE ATGET (1857-1927)

Versailles, Le Poème Satyrique, 1923

inscribed and numbered in ink 'Versailles - le Poème Satyrique par Buyster 1218' (on the reverse of the mount)
albumen print, mounted on card
image/sheet: 8½ x 6¾ in. (21.6 x 17 cm.)
mount: 14¾ x 11¼ in. (37.2 x 28.5 cm.)

\$10,000-15,000



671

RENÉ MAGRITTE (1898-1967)

Le Manteau de Pascal

brush and India ink and inkwash with white heightening on paper
signed 'Magritte' (upper right)
9¾ x 7½ in. (24.7 x 18 cm.)
Painted in 1954

\$300,000-500,000



672

SERGE CHARCHOUNE (1888-1976)

Nature morte

signed, dated and numbered 'Charchoune 45 IX' (lower right)
oil on canvas
14¾ x 18 in. (37.6 x 45.2 cm.)
Painted in 1945

\$12,000-18,000





673

ARMAN (1928-2005)

Accumulation (Lunettes)

signed 'Arman' (on the reverse)
found wood and glass eyeglasses assemblage,
in painted wood box construction
3¼ x 7¾ x 10¼ in. (8.3 x 18.7 x 26 cm.)
Executed circa 1960

\$8,000-12,000

676

MAN RAY (1890-1976)

Natural Painting

signed 'Man Ray' (lower right)
oil and acrylic on canvasboard
7¾ x 9¼ in. (18.8 x 23.6 cm.)
Painted circa 1958

\$8,000-12,000



674

AGUSTÍN CÁRDENAS (1927-2001)

Petite table inutile

signed with initials and inscribed 'C.A., E/A' and stamped
with a foundry mark (on the lower edge)
bronze with dark brown patina
6½ x 6½ x 6 in. (16.5 x 16.5 x 15.2 cm.)
Executed in 1984; this work is an artist's proof

\$15,000-20,000

677

MAN RAY (1890-1976)

Natural Painting

signed and dated 'Man Ray 58' (lower left) and inscribed '2/1'
(lower right)
acrylic on sandpaper laid down on masonite
7¾ x 11 in. (18 x 28 cm.)
Painted in 1958

\$10,000-15,000



675

MAN RAY (1890-1976)

Rayograph, 1943

signed and dated in ink 'Man Ray 1943' (lower right); stamped in black
ink 'ORIGINAL' (on the reverse of the mount)
unique gelatin silver print, mounted on card
image/sheet: 13¾ x 11 in. (35.2 x 27.9 cm.)
mount: 14 x 11¼ in. (35.6 x 28.6 cm.)

\$60,000-80,000



PICASSO CERAMICS ONLINE

Selected Highlights

2-16 May 2022

Browse and Bid at

www.christies.com/picassoceramics

Sale: **20268**

CONTACT

Margaux Morel
Head of Sale
mmorel@christies.com
+1 212 636 2656

Joy Smith
Sale Coordinator
JoySmith@christies.com
+1 212 636 2178

VIEWING

April 30-May 14

Christie's New York
20 Rockefeller Plaza
New York, NY



GENERAL ENQUIRIES
+1 212 636 2002

PLEASE NOTE
This is not a catalogue for the auction. This summary is provided as courtesy to you. Please see christies.com/picassoceramics for full descriptions, the conditions of sale and other important information regarding the auction.

Opposite: Lots 31 & 35
Above: Lot 22



43

PABLO PICASSO (1881-1973)

Visage aux yeux rieurs (A.R. 608)

stamped, marked and numbered 'Edition Picasso/Madoura Plein Feu/Edition Picasso/Madoura/176/350' (underneath)

white earthenware ceramic pitcher, partially engraved, with colored engobe and glaze

Height: 13¼ in. (33.5 cm.)

Conceived on 9 January 1969 and executed in a numbered edition of 350

\$35,000-55,000

45

PABLO PICASSO (1881-1973)

Chouette (A.R. 602)

stamped, marked, and numbered 'Edition Picasso/Madoura Plein Feu/Edition Picasso/Madoura/265/350' (underneath)

white earthenware ceramic vase, partially engraved, with colored engobe and glaze

Diameter: 11¼ in. (28.5 cm.)

\$12,000-18,000



PROPERTY FROM A PRIVATE COLLECTOR

20

PABLO PICASSO (1881-1973)

Poisson fond blanc (A.R. 168)

stamped, marked, and numbered 'Madoura Plein Feu/Empreinte Originale de Picasso/ I.114/133/200' (underneath)

white earthenware ceramic plate with colored engobe and glaze

Length: 16¾ in. (41.8 cm.)

Conceived in 1952 and executed in a numbered edition of 200

\$7,000-10,000



28

PABLO PICASSO (1881-1973)

Service poisson (A.R. 22)

marked and numbered 'Edition Picasso/38/Madoura' and marked with the Suzanne Ramié monogram 'DR' (underneath)

white earthenware ceramic tureen and lid with colored engobe and glaze

Diameter (with handles): 15¾ in. (40 cm.)

Conceived in 1947 and executed in an edition of 300

\$6,000-8,000



PROPERTY FROM AN IMPORTANT PRIVATE COLLECTION

41

PABLO PICASSO (1881-1973)

Tête de chèvre de profil (A.R. 153)

stamped and numbered 'Madoura Plein Feu/Empreinte Originale de Picasso/27/100' (underneath)

white earthenware ceramic plate with colored engobe and glaze

Diameter: 15¾ in. (40.4 cm.)

Conceived in 1952 and executed in a numbered edition of 100

\$10,000-15,000





PROPERTY FROM AN IMPORTANT PRIVATE COLLECTION

73

PABLO PICASSO (1881-1973)

Vase deux anses hautes (A.R. 141)

stamped and marked 'Edition Picasso/Madoura Plein Feu/Edition Picasso/Madoura' (underneath)

white earthenware ceramic vase, partially engraved, with colored engobe and glaze

Height: 15 in. (38.1 cm.)

Conceived in 1952 and executed in an edition of 400

\$25,000-35,000

PROPERTY FROM AN IMPORTANT PRIVATE COLLECTION

62

PABLO PICASSO (1881-1973)

Femme du barbu (A.R. 193)

stamped and marked 'Edition Picasso/Madoura Plein Feu/Edition Picasso/Madoura' (underneath)

white earthenware ceramic pitcher, partially engraved, with colored engobe and glaze

Height: 15 in. (38.5 cm.)

Conceived on 10 July 1953 and executed in an edition of 500

\$20,000-30,000



64

PABLO PICASSO (1881-1973)

Poisson chiné (A.R. 170)

stamped 'Madoura Plein Feu/Empreinte Originale de Picasso' (underneath)

white earthenware ceramic plate with colored engobe and glaze

Length: 16¾ in. (42.6 cm.)

Conceived in 1952 and executed in an edition of 200

\$8,000-12,000



13

PABLO PICASSO (1881-1973)

Vallauris (A.R. 331)

inscribed and dated 'VALLAURIS 1956' (upper and lower center); stamped, marked and numbered 'Madoura Plein Feu/Empreinte Originale de Picasso/C103/8/100' (underneath)

white earthenware ceramic plate with colored engobe, black oxide and glaze

Diameter: 16¾ in. (42.6 cm.)

Conceived in 1956 and executed in a numbered edition of 100

\$20,000-30,000



PROPERTY OF AN IMPORTANT PRIVATE COLLECTION

66

PABLO PICASSO (1881-1973)

Chouette (A.R. 604)

stamped, marked and numbered 'Edition Picasso/Madoura Plein Feu/Edition Picasso/Madoura/34/250' (underneath)

white earthenware ceramic vase, partially engraved, with colored engobe and glaze

Height: 11½ in. (29.7 cm.)

Conceived in 1969 and executed in a numbered edition of 250

\$12,000-18,000





PROPERTY FROM AN IMPORTANT PRIVATE COLLECTION

31

PABLO PICASSO (1881-1973)

Vase aztèque aux quatre visages (A.R. 401)

stamped, marked and numbered 'Edition Picasso/Madoura Plein Feu/Edition Picasso/30/50/Madoura' (underneath)
white earthenware ceramic vessel, partially engraved, with colored engobe and glaze
Height: 21¼ in. (54.4 cm.)
Conceived in 1957 and executed in a numbered edition of 50

\$60,000-80,000

PROPERTY FROM AN IMPORTANT PRIVATE COLLECTION

5

PABLO PICASSO (1881-1973)

Cavalier et cheval (A.R. 138)

stamped, marked and numbered 'Edition Picasso/Madoura Plein Feu/Edition Picasso/Madoura/69/300' (underneath)
white earthenware ceramic pitcher, partially engraved, with colored engobe and glaze
Height: 9¾ in. (24.7 cm.)
Conceived in 1952 and executed in a numbered edition of 300

\$7,000-10,000



47

PABLO PICASSO (1881-1973)

Hibou brillant (A.R. 285)

stamped and marked 'Edition Picasso/Madoura Plein Feu/Edition Picasso' (underneath)
white earthenware ceramic plate, partially engraved, with colored engobe and glaze
Length: 15½ in. (38.5 cm.)
Conceived in 1955 and executed in an edition of 450

\$12,000-18,000



52

PABLO PICASSO (1881-1973)

Femme (A.R. 297)

stamped and marked 'Madoura Plein Feu/D'Après Picasso/Edition Picasso' (underneath)
white earthenware ceramic pitcher with colored engobe and glaze
Height: 12¾ in. (31.5 cm.)
Conceived in 1955 and executed in an edition of 100

\$10,000-15,000



PROPERTY FROM AN IMPORTANT PRIVATE COLLECTION

55

PABLO PICASSO (1881-1973)

Paysage (A.R. 208)

stamped and numbered 'Madoura Plein Feu/Edition Picasso 35/200' (underneath)
white earthenware ceramic plate, partially engraved, with colored engobe and glaze
Diameter: 16½ in. (42 cm.)
Conceived on 9 December 1953 and executed in a numbered edition of 200

\$8,000-12,000





22

PABLO PICASSO (1881-1973)

Personnages et têtes (A.R. 242)

stamped and numbered 'Madoura Plein Feu/Empreinte Originale de Picasso/2/25'

(inside)

terracotta vase with colored engobe

Height: 22 $\frac{7}{8}$ in. (58.1 cm.)

Conceived in 1954 and executed in a numbered edition of 25

\$80,000-120,000

23

PABLO PICASSO (1881-1973)

Visage de profil (A.R. 209)

dated '19.12.53.' (on the top); stamped, marked and numbered

'Edition Picasso/Madoura Plein Feu/Edition Picasso/

Madoura/R.154/66/150' (underneath)

terracotta vase, partially engraved, with colored engobe and glaze

Height: 9 $\frac{1}{2}$ in. (25 cm.)

Conceived on 19 December 1953 and executed in a numbered edition of 150

\$15,000-20,000

PROPERTY FROM AN IMPORTANT PRIVATE COLLECTION

15

PABLO PICASSO (1881-1973)

Le Barbu (A.R. 217)

stamped and marked 'Edition Picasso/Madoura Plein Feu/Edition

Picasso' (underneath)

white earthenware ceramic pitcher, partially engraved, with colored

engobe and glaze

Height: 12 $\frac{7}{8}$ in. (33.8 cm.)

Conceived in 1953 and executed in an edition of 500

\$10,000-15,000

PROPERTY FROM AN IMPORTANT PRIVATE COLLECTION

21

PABLO PICASSO (1881-1973)

Plat espagnol au toros (A.R. 403)

stamped, marked and numbered 'Madoura Plein Feu/Edition Picasso/

Madoura/Edition Picasso/84/100' (underneath)

terracotta bowl, partially engraved, with colored engobe and glaze

Diameter: 16 $\frac{1}{4}$ in. (41.3 cm.)

Conceived in 1957 and executed in a numbered edition of 100

\$7,000-10,000

25

PABLO PICASSO (1881-1973)

Femme (A.R. 300)

stamped, marked, numbered 'Edition Picasso/Madoura Plein Feu/

Edition Picasso/N° 25/100' (underneath)

white earthenware ceramic pitcher with coloured engobe and glaze

Height: 11 $\frac{1}{2}$ in. (29.3 cm.)

Conceived in 1955 and executed in a numbered edition of 100

\$8,000-12,000





PROPERTY FROM AN IMPORTANT PRIVATE COLLECTION

35

PABLO PICASSO (1881-1973)

Vase aztèque aux quatre visages (A.R. 402)

stamped, marked and numbered 'Edition Picasso/Madoura Plein Feu/Edition Picasso/Madoura/27/100' (underneath)

white earthenware ceramic vessel, partially engraved, with colored engobe and glaze

Height: 21½ in. (54.8 cm.)

Conceived in 1957 and executed in a numbered edition of 100

\$60,000-80,000

53

PABLO PICASSO (1881-1973)

Visage de femme (A.R. 220)

stamped 'Madoura Plein Feu/Edition Picasso' (underneath)
white earthenware ceramic plate, partially engraved, with colored engobe and glaze

Length: 14¾ in. (36.5 cm.)

Conceived in 1953 and executed in an edition of 400

\$20,000-30,000



18

PABLO PICASSO (1881-1973)

Tête de chèvre de profil (A.R. 145)

stamped 'Madoura Plein Feu/Empreinte Originale de Picasso' (underneath)

white earthenware ceramic plate with colored engobe and glaze

Length: 20 ¼ in. (51.4 cm.)

Conceived on 5 June 1952 and executed in an edition of 250

\$10,000-15,000



16

PABLO PICASSO (1881-1973)

Pichet aux arums (A.R. 189)

dated '20.4.53.' (in reverse); stamped, marked and numbered 'Edition Picasso/Madoura Plein Feu/Edition Picasso/R.151/62/350' (underneath)

white earthenware ceramic pitcher, partially engraved, with colored engobe and glaze

Height: 12 in. (30.4 cm.)

Conceived on 20 April 1953 and executed in a numbered edition of 350

\$10,000-15,000



33

PABLO PICASSO (1881-1973)

La Pique (A.R. 103)

stamped and numbered 'Madoura Plein Feu/36/150'

white earthenware ceramic plate with colored engobe and glaze

Diameter: 15¾ in. (39 cm.)

Conceived on 29 June 1950 and executed in a numbered edition of 150

\$7,000-10,000



IMPRESSIONIST & MODERN ART INDEX

A

Archipenko, A. 883
Ardon, M. 906
Arp, J. (H.) 907, 908

B

Balthus, 766
Bellmer, H. 712
Bonnard, P. 851
Boudin, E. 802
Brancusi, C. 756
Braque, G. 844, 869, 901
Braslier, A. 842, 925, 927
Brauner, V. 909, 915
Buffet, B. 703, 843, 930

C

Camoin, C. 853
Canu, Y. 859
Cariot, G. 858
Chagall, M. 702, 709, 747, 761, 767, 845, 867, 918, 924
Chirico, G. de 894
Cocteau, J. 913
Corot, J.-B.-C. 818

D

Dalí, S. 912
Daumier, H. 736
Degas, E. 731, 740, 743, 745, 746, 801, 813, 837
Derain, A. 708, 771, 929
Dominguez, O. 916
Dufy, R. 704, 762, 765, 769, 772, 846, 923, 926, 928

F

Fantin-Latour, H. 819
Fini, L. 911
Foujita, L.T. 706, 707, 763, 921

G

Gausson, L. 803
Giacometti, A. 711, 748, 896, 897, 898, 899, 900
Grosz, G. 725, 726, 758, 759, 760
Guillaumin, A. 811, 860, 863

H

Hambourg, A. 862
Herbin, A. 848, 919
Hoschedé-Monet, B. 830

J

Jawlensky, A. 720

K

Kirchner, E. 721
Kisling, M. 841
Klee, P. 719, 722, 723, 754
Kokoschka, O. 727
Kolbe, G. 876

L

Lam, W. 910
Laugé, A. 816
Laurens, H. 752
Lebasque, H. 850
Léger, F. 878, 882
Léger, F. (After) 885
Lempicka, T. de 890
Lipchitz, J. 881, 931
Loiseau, G. 805, 828

M

Magritte, R. 713, 714
Maillol, A. 809, 826
Manzù, G. 892, 893
Marini M. 895
Martin, H. 852
Matisse, H. 705, 729, 749, 768, 847
Metzinger, J. 888, 889
Miró, J. 710, 715, 751, 755, 917
Mondrian, P. 874, 875
Monet, C. 835
Moore, H. 753, 879, 902, 903, 904, 905
Morandi, G. 891

P

Pascin, J. 764
Pechstein, M. 872
Picabia, F. 817
Picasso, P. 701, 730, 750, 877
Pinchon, R. 857
Pissarro, C. 735, 739, 814, 825, 833, 839
Pissarro, L. 836
Puigauveau, F. du 820

R

Redon, O. 733
Renoir, P.-A. 732, 734, 741, 804, 807, 810, 815, 824, 827, 834, 838
Rodin, A. 831, 854, 861, 864
Rouault, G. 757, 770, 920

S

Schiele, E. 724
Schwitters, K. 716, 717, 718
Sérusier, P. 821, 822
Seurat, G. 808
Sisley, A. 812, 829
Soutine, C. 871
Survage, L. 914

T

Toorop, J. 728
Torres-García, J. 884
Toulouse-Lautrec, H. de 738

U

Utrillo, M. 866, 868, 922

V

Valmier, G. 880
Valtat, L. 840, 849, 856
van Dongen, K. 865
van Rysselberghe, T. 806
Vlaminck, M. de 870
Vuillard, E. 737, 742, 744, 823, 832, 855

Z

Zadkine, O. 886, 887

ILLUSTRATIONS

FRONT COVER

Lot 835
Claude Monet, *Soleil couchant, temps brumeux*,
Pourville, 1882.

FRONTISPIECE ONE

Lot 833
Camille Pissarro, *Julie Pissarro épluchant les légumes (dans le jardin de Pontoise)*, 1878.

FRONTISPIECE TWO

Lot 819
Henri Fantin-Latour, *Vase de fleurs avec une tasse de café*, 1865.

FRONTISPIECE THREE

Lot 731
Edgar Degas, *Danseuse, buste*, 1897.

FRONTISPIECE FOUR

Lot 838
Pierre-Auguste Renoir, *Nu au Fauteuil*,
1885-1890.

FRONTISPIECE FIVE

Lot 755
Joan Miro, *Metamorphose*, 1936. © Successió
Miró / Artists Rights Society (ARS), New York
/ ADAGP, Paris 2022.

FRONTISPIECE SIX

Lot 884
Joaquín Torres-García, *Estructura con formas trabadas*, 1933. © Copyright Alejandra, Aurelio
y Claudio Torres.

OPPOSITE SALE INFO PAGE

Lot 895
Marino Marini, *Piccolo Cavaliere*, 1950. © 2022
Marino Marini / Artists Rights Society (ARS),
New York / SIAE, Rome.

OPPOSITE CONTACT INFORMATION

Lot 806
Théo van Rysselberghe, *Eucalyptus à Cavalière*, 1905.

WORKS ON PAPER SALE DIVIDER PAGE

Lot 708
André Derain, *Le Repos*, 1906. © 2022 Artists
Rights Society (ARS), New York / ADAGP,
Paris.

DAY SALE DIVIDER PAGE

Lot 814
Camille Pissarro, *L'Anse des Pilotes, après-midi*,
temps ensoleillé, Le Havre, 1903.

SURREALIST DIVIDER PAGE:

Lot 615
Man Ray, *Le Violon d'Ingres*, 1924.

THE SURREALIST WORLD

of Rosalind Gersten Jacobs and Melvin Jacobs
INDEX

A

Abbott, B. 622
Arman 643, 673
Arp, J. 605
Atget, E. 670

B

Becher, B. & H. 653
Bellmer, H. 669
Brauner, V. 629

C

Cárdenas, A. 651, 674
Casebere, J. 625
Celmins, V. 612
Charhoune, S. 672
Christo 624
Copley, N. 634-637
Copley, W. 611, 627, 649
Cornell, J. 666

D

Dalí, S. 623, 660
Duchamp, M. 613, 662

E

Eisenstaedt, A. 645
Ernst, M. 603, 638, 650,
667

G

Gilbert & George 626,
656

H

Humphry, R. 604

L

Lalanne, C. 630
Loy, M. 665

M

Magritte, R. 609, 628,
640, 644, 654, 658,
659, 671
Man Ray 601, 602, 606,
614, 615, 616, 617, 618,
619, 620, 621, 631, 632,
633, 641, 646, 647, 648,
655, 657, 661, 663, 668,
675, 676, 677
Man Ray & William
Copley 610
Miller, L. 642, 664

P

Picasso, P. (After) 639

R

Rickey, G. 652

T

Tanguy, Y. 608
Tanning, D. 607